



22/90-92 Elizabeth Bay Road ELIZABETH BAY, NSW

1 bed | 1 bath

R&W

Fresh, bright and ready to please, this north facing apartment is quietly set well back from the exclusive Elizabeth Bay Road village-green. Offering level access in Brentwood Gardens ? a well maintained strata security complex, this affordable harbourside pad offers privacy and easy living. A short walk to waterfront parks, tennis courts, marinas and bus/train services, this delightful first home or investment is also convenient to local cafe/delis and Potts Point restaurants, supermarkets, shops and high-fashion lifestyle.

rwebay.com.au/2124015

Greg McKinley 0412 044 822

Luke McDonnell 0418 844 110

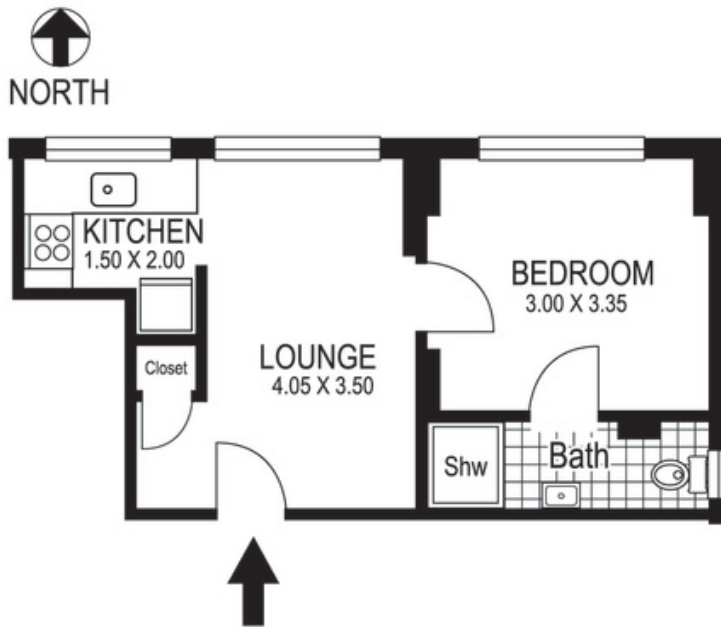
Proudly Richardson&Wrench

Richardson & Wrench Elizabeth Bay / Potts Point
02 8356 2700

R&W | The best reputation
in real estate
Elizabeth Bay/Potts Point

Contact:
Greg McKinley
0412 044 822

Contact:
Andrew Hoggett
0412 208 614



22 / 90-92 Elizabeth Bay Road
ELIZABETH BAY

Plans shown are for presentation purposes only and are not part of any legal document or title and are subject to errors, omissions, inaccuracies and they should not be used as sole and/or accurate reference for purchasing decision. Interested parties should make their own enquiries using other sources supplied. Dimensions shown on the plans are approximate values in length by width. Illustration by Raoul Isidro 04111 28500.

Every precaution has been taken to establish accuracy of the information in this brochure but does not constitute any representation by the vendor or agent.

R&W