

16/24-26 Onslow Avenue ELIZABETH BAY, NSW

1 bed | 1 bath

R&W

Centrally located yet enjoying quiet privacy with leafy treescape outlooks, this one-bedroom strata apartment is an excellent first home or income producer. Prime positioned in the exclusive Westchester, a grand classic Art Deco security building, this cosmopolitan investment in lifestyle and location offers a clever use of space and style. Just metres to local cafes and delis, or a short walk to harbourfront Beare Park, Rushcutters Bay tennis courts, parks and marinas, this apartment is also an easy stroll to Potts Point cafes, restaurants, shops, supermarkets, transport and mere minutes to the CBD.

...

rwebay.com.au/2124057

Greg McKinley 0412 044 822

Andrew Hoggett 0412 208 614

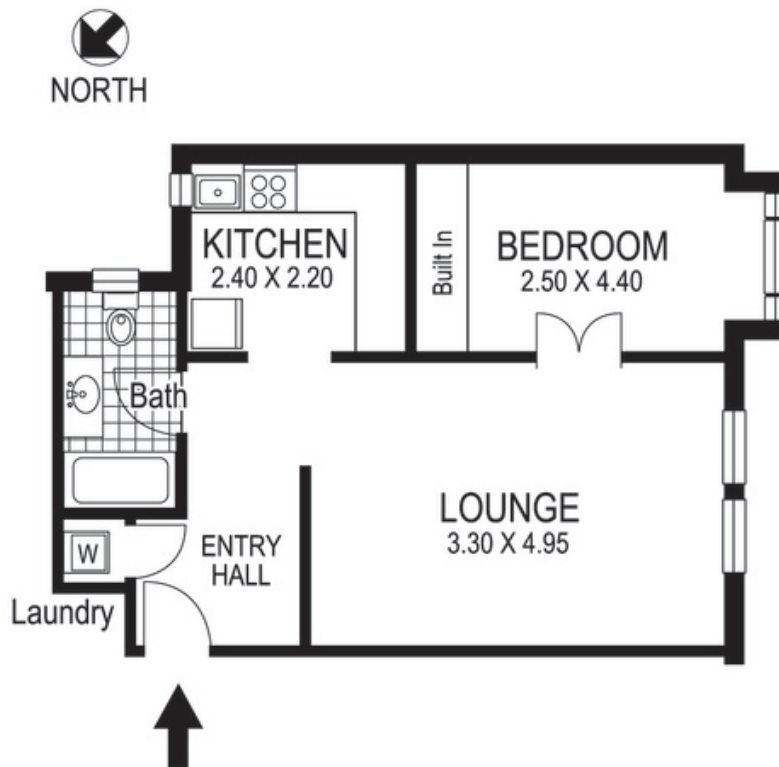
Proudly Richardson&Wrench

Richardson & Wrench Elizabeth Bay / Potts Point
02 8356 2700

R&W | The best reputation
in real estate
Elizabeth Bay / Potts Point

Contact:
Greg McKinley
0412 044 822

Contact:
Andrew Hoggett
0412 208 614



16 / 24-26 Onslow Avenue
ELIZABETH BAY

Plans shown are for presentation purposes only and are not part of any legal document or title and are subject to errors, omissions, inaccuracies and they should not be used as sole and/or accurate reference for purchasing decision. Interested parties should make their own enquiries using other sources supplied. Dimensions shown on the plans are approximate values in length by width. Illustration by Raoul Isidro 04111 28500.