



## 12/2 Elizabeth Bay Crescent ELIZABETH BAY, NSW

3 bed | 3 bath | 1 car

**R&W**

- Amazing water views across harbour to the CYC
- Huge sun-drenched terrace w full electric awnings
- 3 carpeted upstairs bedrooms, lavishly appointed
- Master bedroom suite w harbour views, built-ins
- A spectacular light-filled downstairs living area
- Communal pool, lawn, jetty for harbour taxi access
- Easy stroll to famous eateries, cafes + harbour parks

[rwebay.com.au/3966458](http://rwebay.com.au/3966458)

Greg McKinley 0412 044 822

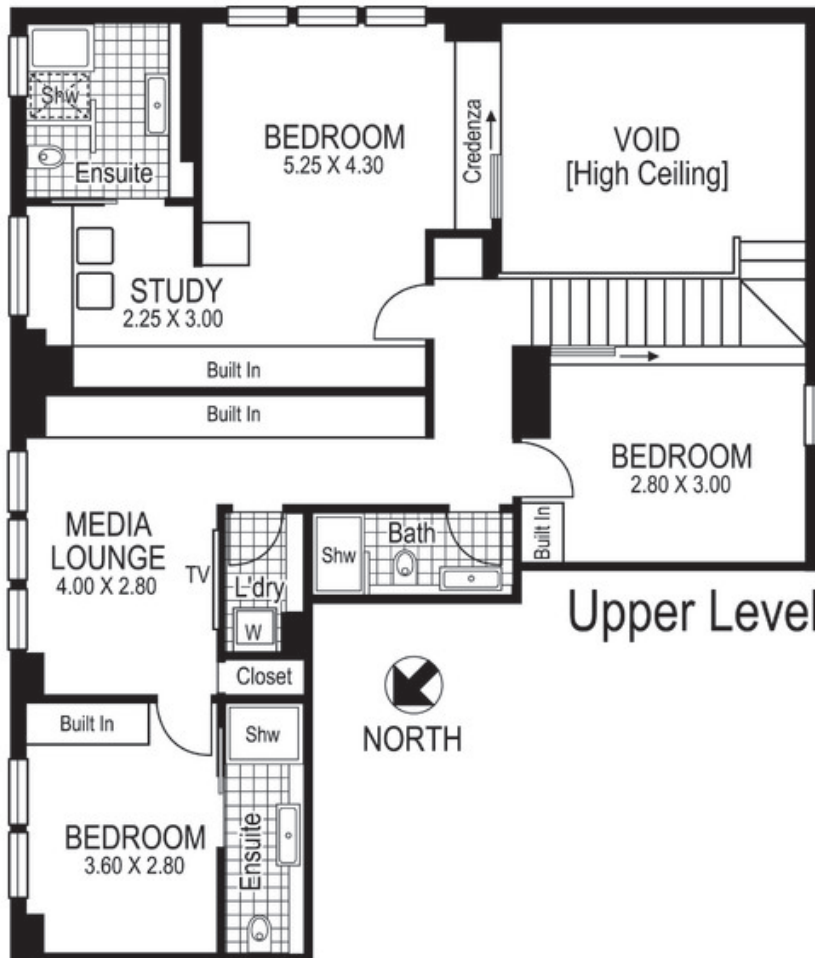
Penny Timothy 0418 546 500

Andrew Hoggett 0412 208 614

**Proudly Richardson&Wrench**

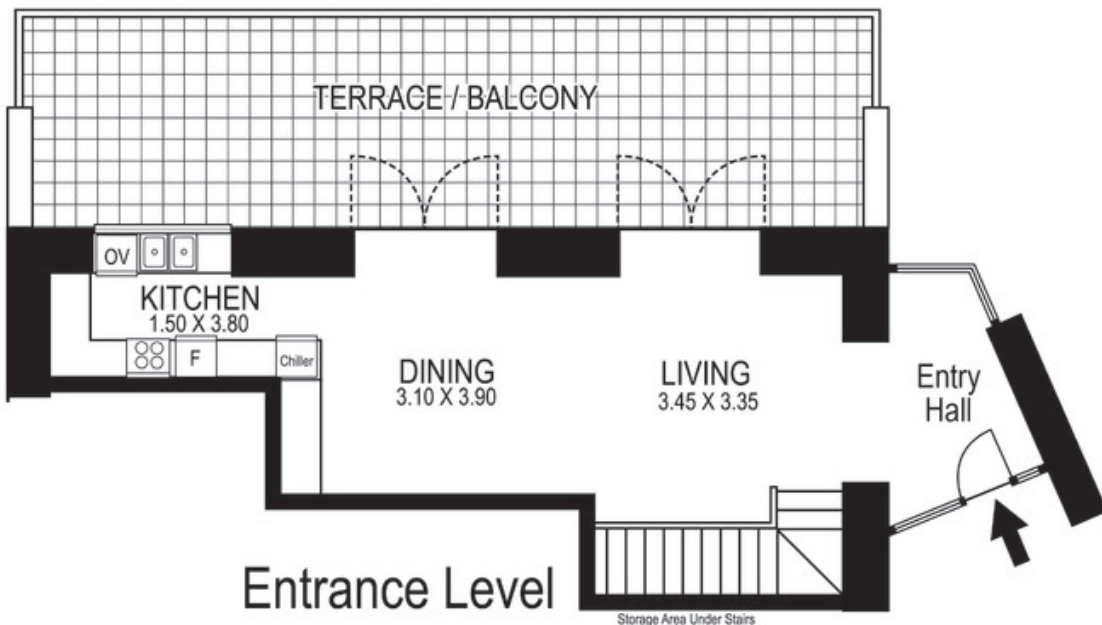
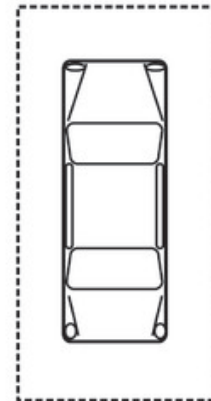
Richardson & Wrench Elizabeth Bay / Potts Point  
02 8356 2700





Elizabeth Bay / Potts Point  
8356 2700

**CAR PARKING SPACE**  
(ON SEPARATE TITLE)



# 12 / 2 Elizabeth Bay Crescent ELIZABETH BAY *"BEVERLEY HALL"*

Plans shown are for presentation purposes only and are not part of any legal document or title and are subject to errors, omissions, inaccuracies and they should not be used as the sole and/or accurate reference for purchasing decision. Interested parties should make their own inquiries using other sources supplied. Dimensions in length and width are approximate. Illustration by Raoul Isidro 0411128500

Every precaution has been taken to establish accuracy of the information in this brochure but does not constitute any representation by the vendor or agent.

