



702/85 Macleay Street POTTS POINT, NSW

3 bed | 1 bath

This lovely North facing apartment is set high in the refurbished 1930s Art Deco 'Werrington' building, designed by famed architect Emil Sodersten. In a block of just 16, this house-like residence features polished floorboards, internal laundry, and ceiling cornices framing high ceilings. Views from the master bedroom, dining and living room capture Elizabeth Bay and the Harbour. A superb home or investment in a sought-after location, this is simply superb Potts Point living.

- Beautifully renovated home in well-maintained building

R&W

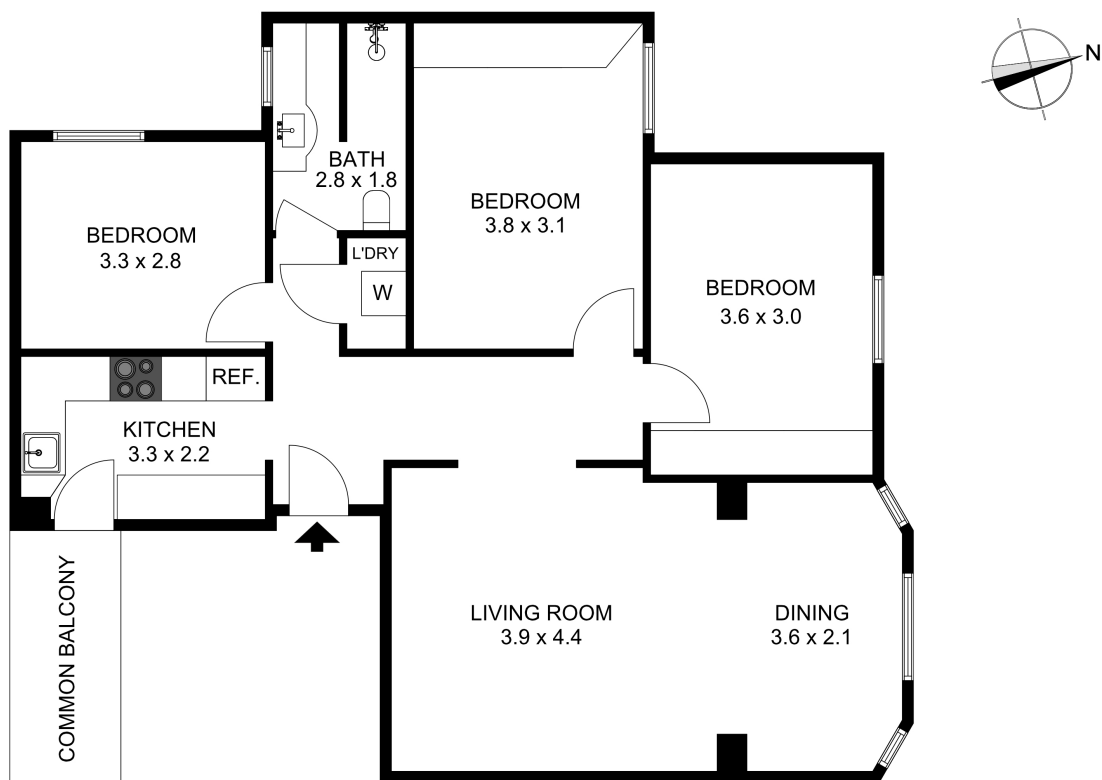
rwebay.com.au/4608104

Luke McDonnell 0418 844 110

Angelo Bouras 0401 658 653

Proudly Richardson&Wrench

Richardson & Wrench Elizabeth Bay / Potts Point
02 8356 2700



702/85 MACLEAY STREET, POTTS POINT

R&W

The floor plan is not to scale; measurements are indicative and in metres. Exterior elements are not in position. Plans should not be relied on. Interested parties should make and rely on their own enquiries.

Every precaution has been taken to establish accuracy of the information in this brochure but does not constitute any representation by the vendor or agent.

R&W