



97 Victoria Street POTTS POINT, NSW

7 bed | 3 bath | 2 car

- Grand c1900s terrace, huge proportions, high ceilings, 4 levels
- DA-approved for renovation, poised for creation of luxury home
- 9.5m wide, zoned 10 mixed use w 2 secure carspots on sep. title
- 7 or more bedrooms, flexible floorplan offering a variety of uses
- Huge ground floor living + kitchen, spacious further lower level
- 3rd level bedroom zone featuring period detailed fron...

R&W

rwebay.com.au/4985489

Jason Boon 0418 671 494

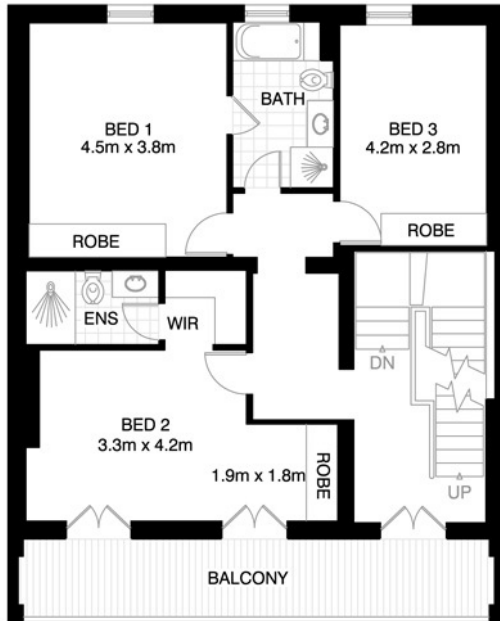
Geoff Cox 0418 231 004

Proudly Richardson&Wrench

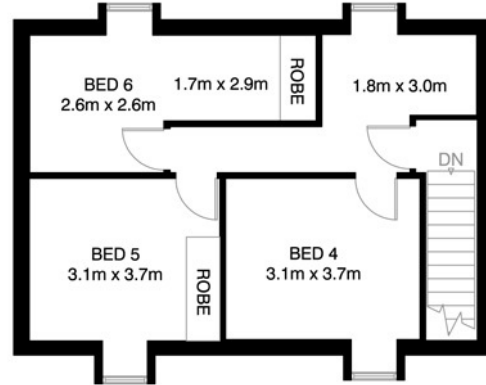
Richardson & Wrench Elizabeth Bay / Potts Point
02 8356 2700

R&W

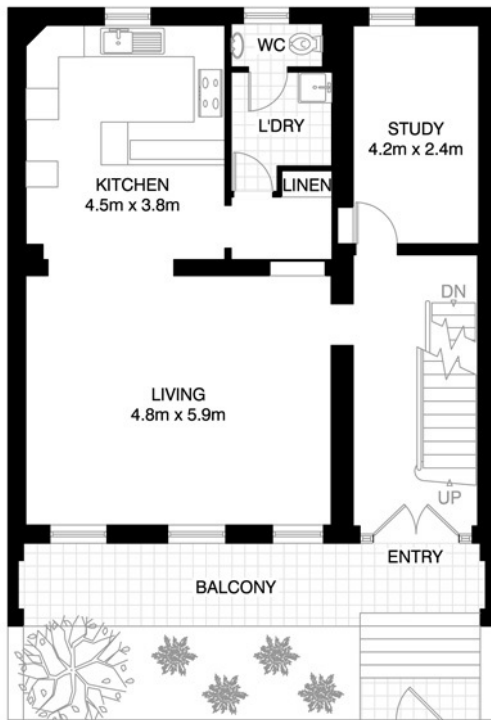
Elizabeth Bay / Potts Point
8356 2700



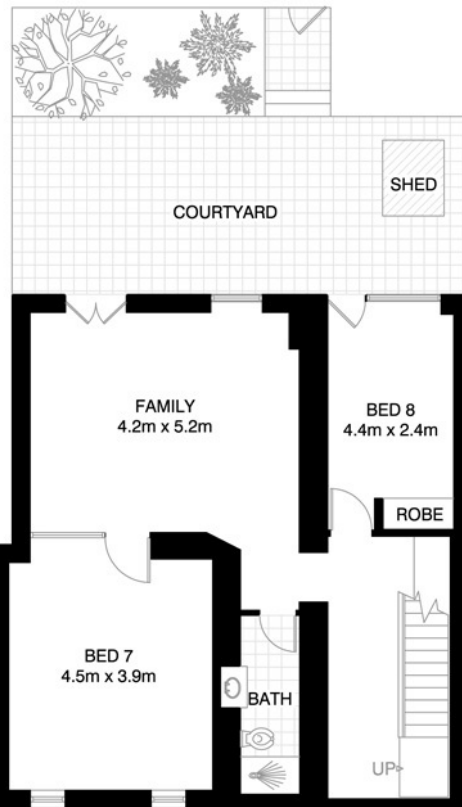
FIRST FLOOR



SECOND FLOOR



GROUND FLOOR



LOWER GROUND FLOOR



*PLANS SHOWN ONLY INDICATIVE OF LAYOUT. DIMENSIONS ARE APPROXIMATE.

Floor plan supplied by V-Mark Design Pty Ltd. This floor plan is provided for indicative purposes only.

Measurements are approximate and not to scale. The vendor, agency and supplier will accept no liability for its accuracy. Interested parties are advised to make their own independent enquiries.

POTTS POINT
97 VICTORIA STREET

*INTERNAL FLOOR AREA APPROX 300m²

Every precaution has been taken to establish accuracy of the information in this brochure but does not constitute any representation by the vendor or agent.

R&W