



19/68 Elizabeth Bay Rd ELIZABETH BAY, NSW

3 bed | 1 bath

R&W

Elegant 3 bedroom apartment on Level 4 of 'The Raymond' this apartment blends house like proportions classic architecture and modern amenities. With a private North East aspect the apartment has a sunny feel and takes advantage of its upper floor position with Harbour views.

'The Raymond' designed circa 1930 by architect Edward Vennard is one of the best maintained and most admirable buildings of this highly fashionable area. An easy walk to the Harbour, restaurants, transport & CBD.

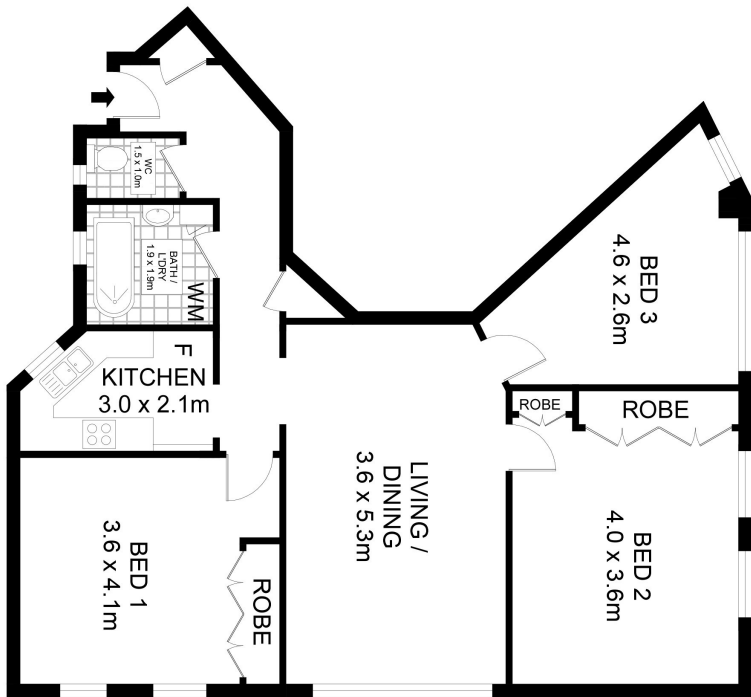
rwebay.com.au/5009860

Greg McKinley 0412 044 822

Luke McDonnell 0418 844 110

Proudly Richardson&Wrench

Richardson & Wrench Elizabeth Bay / Potts Point
02 8356 2700



19/68 Elizabeth Bay Road, Elizabeth Bay



Disclaimer
Floor Plan measurements are approximate and are for illustrative purposes only. While we cannot doubt the floor plans accuracy, we make no guarantee, warranty or representation as to the accuracy and completeness of the floor plan.