



## 27 Roslyn Street POTTS POINT, NSW

5 bed | 2 bath | 2 car

- Victorian terrace, 4 levels, marvellous renovation potential (STCA)
- 5 huge bedrooms, one w north-facing balcony, heritage iron lacework
- Spacious formal living and dining rooms, gas connection fireplaces
- Open plan rear family zone, gas kitchen + bi-fold doors to courtyard
- Secure rear off-street parking for two cars, private + peaceful position
- Level access from dual street entry, front garden and...

**R&W**

**[rwebay.com.au/5011308](http://rwebay.com.au/5011308)**

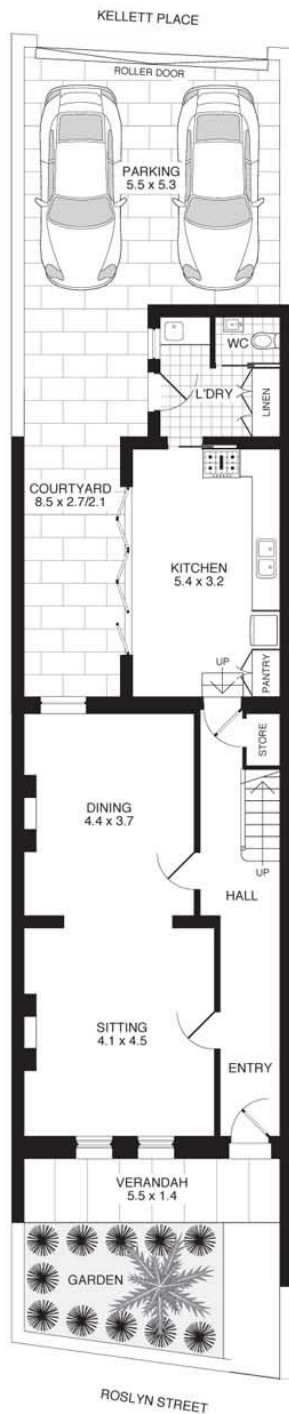
Jason Boon 0418 671 494

Geoff Cox 0418 231 004

**Proudly Richardson&Wrench**

Richardson & Wrench Elizabeth Bay / Potts Point  
02 8356 2700

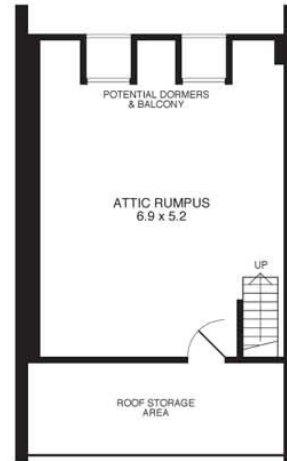
# 27 ROSLYN STREET ELIZABETH BAY



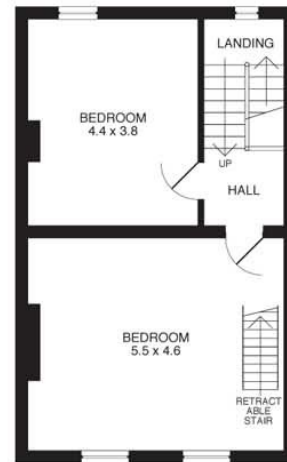
**GROUND FLOOR**  
Scale 1cm = 1m (approx)



**FIRST FLOOR**  
Scale 1cm = 1m (approx)

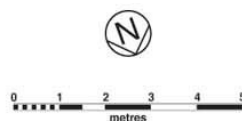


**ATTIC**  
Scale 1cm = 1m (approx)



**SECOND FLOOR**  
Scale 1cm = 1m (approx)

E&OE This plan is for illustrative purposes only and dimensions are approximate. It does not constitute part of any legal document or commercial contract for the sale or lease of this property.  
COPYRIGHT © 2009 PROMOPANS 02 9572 7111  
Warning: Unauthorised users will be prosecuted



Contact: Jason Boon  
D: 02 8356 2733 M: 0418 671 494  
E: jboon@rwebay.com.au

**R&W** Elizabeth Bay  
Potts Point