



3/22-24 Kings Cross Road POTTS POINT, NSW

1 bed | 1 bath

Featuring a flowing floorplan with scope to add value or simply rent out or occupy, this city side apartment is in Kew Lodge, the 1918 landmark complex.

- Separate kitchen with potential to add value
- Open plan living and dining area
- Double bedroom with wall to wall-built ins
- Updated bathroom with internal laundry facilities
- Soaring ceiling heights and timber floors t/o
- Level access, tall windows, decorative ceiling

R&W

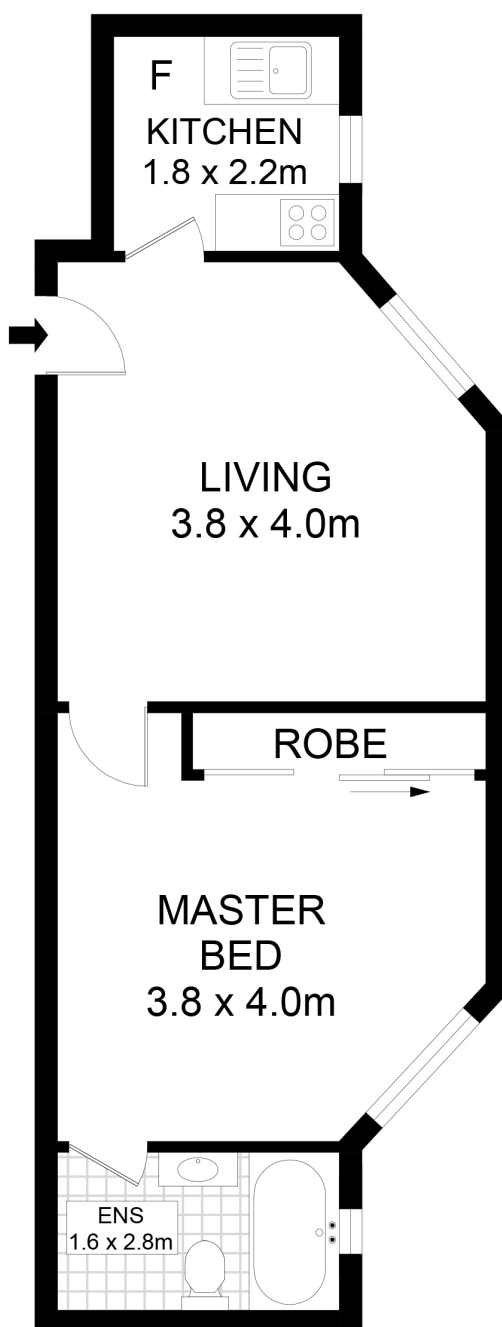
rwebay.com.au/5044782

Angelo Bouras 0401 658 653

Luke McDonnell 0418 844 110

Proudly Richardson&Wrench

Richardson & Wrench Elizabeth Bay / Potts Point
02 8356 2700



3/22-24 Kings Cross Road, Potts Point

Disclaimer

Floor Plan measurements are approximate and are for illustrative purposes only. While we cannot doubt the floor plans accuracy, we make no guarantee, warranty or representation as to the accuracy and completeness of the floor plan.