



## 44 Roslyn Gardens ELIZABETH BAY, NSW

4 bed | 3 bath | 2 car

**R&W**

- Historically significant 1890s terrace, modern luxury renovation
- 4 bedrooms, set over 4 levels, magnificently appointed throughout
- Gorgeous main level living + formal dining, soaring high ceilings
- Huge master bedroom with extensive b/ins, private front balcony
- 3 further immaculate bedrooms and living spaces on lower floors
- Sleek showpiece gas kitchen feat Miele appliances, st...

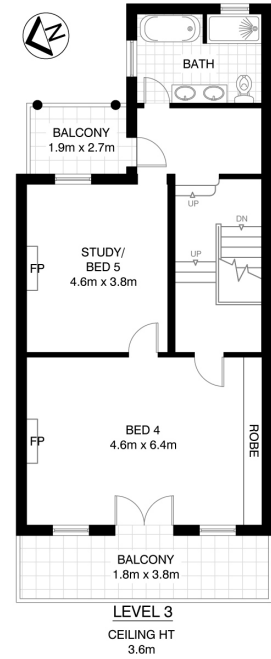
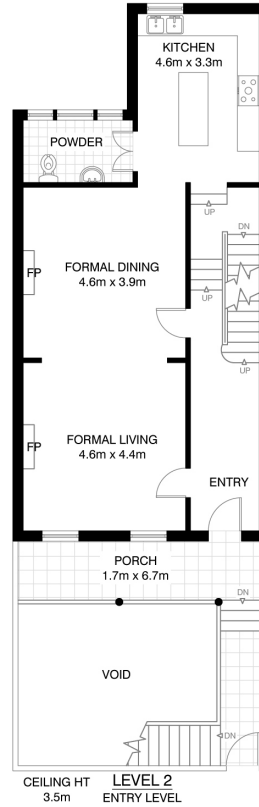
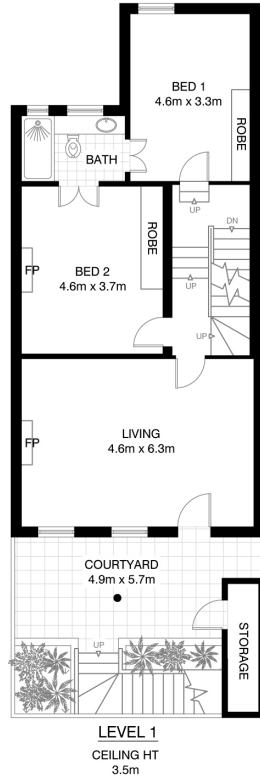
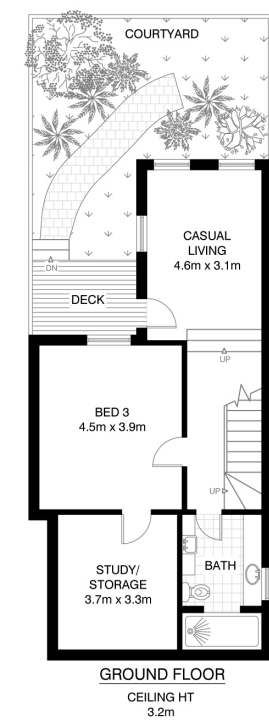
**[rwebay.com.au/5261774](http://rwebay.com.au/5261774)**

Jason Boon 0418 671 494

Geoff Cox 0418 231 004

**Proudly Richardson&Wrench**

Richardson & Wrench Elizabeth Bay / Potts Point  
02 8356 2700



**R&W**

Elizabeth Bay / Potts Point  
8356 2700

**RUSHCUTTERS BAY**  
**44 ROSLYN GARDENS**  
\*INTERNAL FLOOR AREA APPROX 300m<sup>2</sup>

0 1 2 3 4 5  
SCALE (METRES)

\*PLANS SHOWN ONLY INDICATIVE OF LAYOUT. DIMENSIONS ARE APPROXIMATE.  
Floor plan supplied by V-Mark Design Pty Ltd. This floor plan is provided for indicative purposes only.  
Manufacturers' sizes, measurements and set to scale. The vendor, agent and supplier will accept no liability for its accuracy. Interested parties are advised to make their own independent enquiries.

Every precaution has been taken to establish accuracy of the information in this brochure but does not constitute any representation by the vendor or agent.

**R&W**