



Birtley Towers 86/8 Birtley Place ELIZABETH BAY, NSW

2 bed | 1 bath

R&W

Designed by acclaimed architect Emil Sodersten in 1934, Birtley Towers is a tightly held and highly sought after building, and the flexible floorplan provides multiple options for a second bedroom / dining room and home office / study.

- >Prestige Art Deco building
- >King-size main bedroom, large dining room / second bedroom, separate study / home office

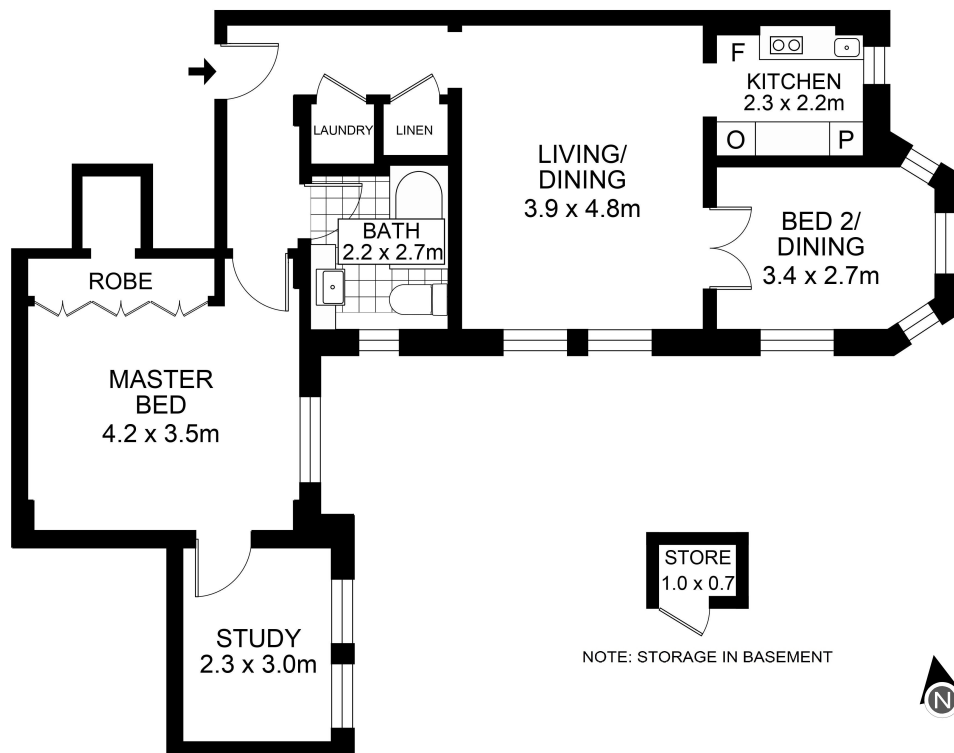
rwebay.com.au/5729402

Penny Timothy 0418 546 500

Greg McKinley 0412 044 822

Proudly Richardson&Wrench

Richardson & Wrench Elizabeth Bay / Potts Point
02 8356 2700



86/8 Birtley Place, Elizabeth Bay

Disclaimer
Floor Plan measurements are approximate and are for illustrative purposes only. While we cannot doubt the floor plans accuracy, we make no guarantee, warranty or representation as to the accuracy and completeness of the floor plan