



## 801/12 Macleay Street POTTS POINT, NSW

1 bed | 1 bath

**R&W**

- Macleay Regis, an Art Deco icon in a fashionable village setting
- Old world glamour at its very best in an unbeatable location
- Grand entry vestibule and lobby with 2 lifts
- Level 8, breathtaking city views and a view-swept balcony
- King sized bedroom with a dressing room and picture windows
- Spacious living and separate dining with polished parquetry throughout

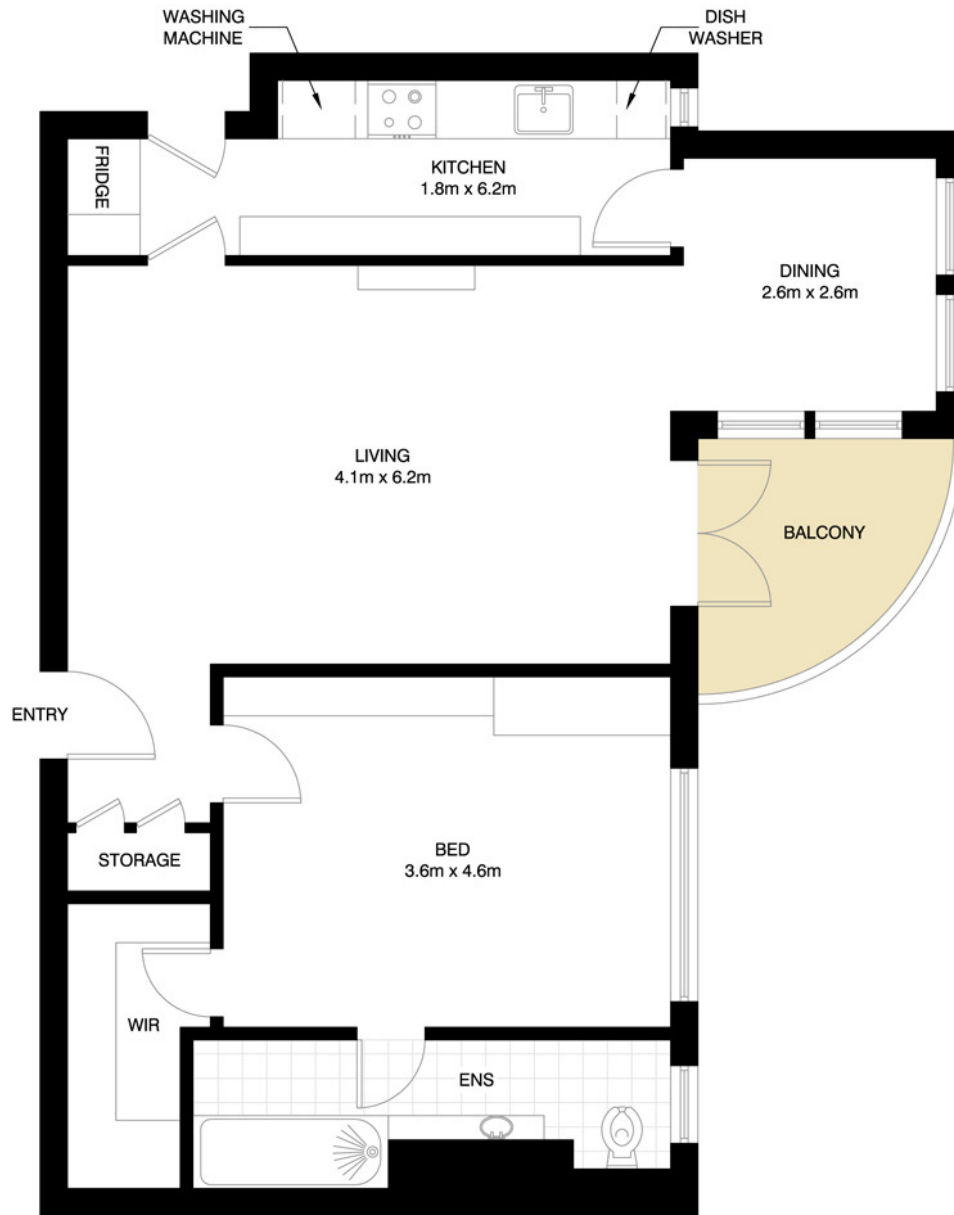
**[rwebay.com.au/5946549](http://rwebay.com.au/5946549)**

Jason Boon 0418 671 494

Geoff Cox 0418 231 004

**Proudly Richardson&Wrench**

Richardson & Wrench Elizabeth Bay / Potts Point  
02 8356 2700



**8TH FLOOR**



**POTTS POINT**  
801/12 MACLEAY STREET

\*PLANS SHOWN ONLY INDICATIVE OF LAYOUT. DIMENSIONS ARE APPROXIMATE.  
Floor plan supplied by V-Mark Design Pty Ltd. This floor plan is provided for indicative purposes only.  
Measurements are approximate and not to scale. The vendor, agency and supplier will accept no liability for its accuracy. Interested parties are advised to make their own independent enquiries.