



8/15 Billyard Avenue ELIZABETH BAY, NSW

2 bed | 2 bath

R&W

Gazing directly over the waters of Elizabeth Bay and across Sydney Harbour, a beautiful harbourside lifestyle awaits in this gracious 2-bedroom sanctuary. Set high in the gorgeous 'Clanricarde' building on dress circle Billyard Ave, it blends expansive interiors with period details to present as a lovely home in one of Sydney's most exclusive enclaves.

Positioned high on the 3rd level of this immaculate blo...

rwebay.com.au/6353333

Jason Boon 0418 671 494

Geoff Cox 0418 231 004

Joss Reid 0414 662 391

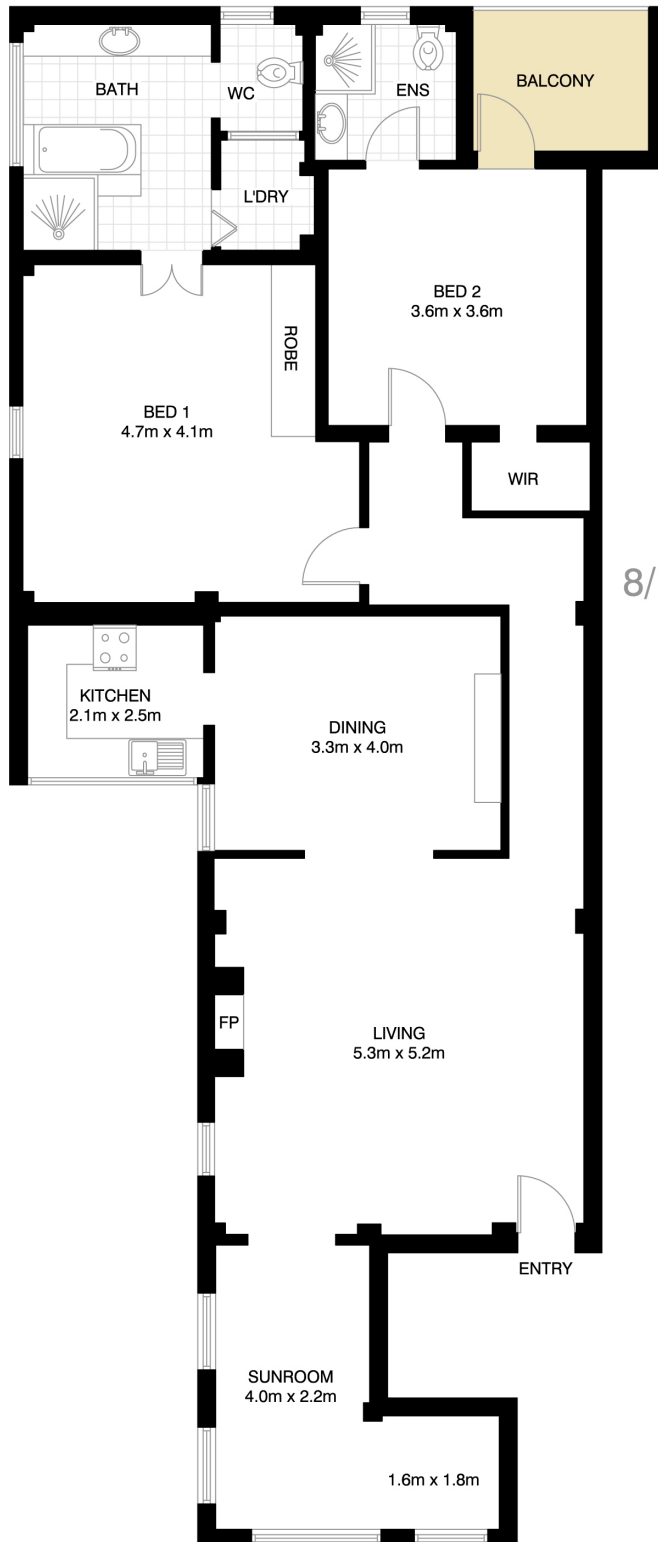
Proudly Richardson&Wrench

Richardson & Wrench Elizabeth Bay / Potts Point
02 8356 2700



R&W

Elizabeth Bay / Potts Point
8356 2700



ELIZABETH BAY
8/15 BILLYARD AVENUE



*PLANS SHOWN ONLY INDICATIVE OF LAYOUT. DIMENSIONS ARE APPROXIMATE.

Floor plan supplied by V-Mark Design Pty Ltd. This floor plan is provided for indicative purposes only.

Measurements are approximate and not to scale. The vendor, agency and supplier will accept no liability for its accuracy. Interested parties are advised to make their own independent enquiries.

Every precaution has been taken to establish accuracy of the information in this brochure but does not constitute any representation by the vendor or agent.

R&W