



159 Victoria Street POTTS POINT, NSW

4 bed | 4 bath | 2 car

Rare and remarkable, the coming-to-market of this incredible circa 1880 terrace house represents a stunning Sydney opportunity in one of Potts Point's most sought-after locations. Set in the heart of leafy Victoria St, this 5-level property is highlighted by vast interiors plus a superb elevated rear terrace offering CBD views and aspect towards Sydney Harbour, along with a prized LUG for one to two cars.

Zoned mixed-use commercial/residential, it offers incre...

R&W

rwebay.com.au/6405468

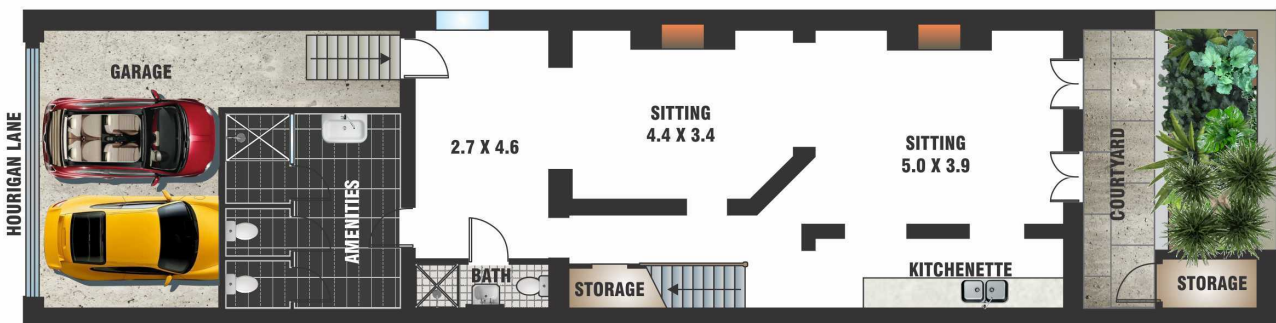
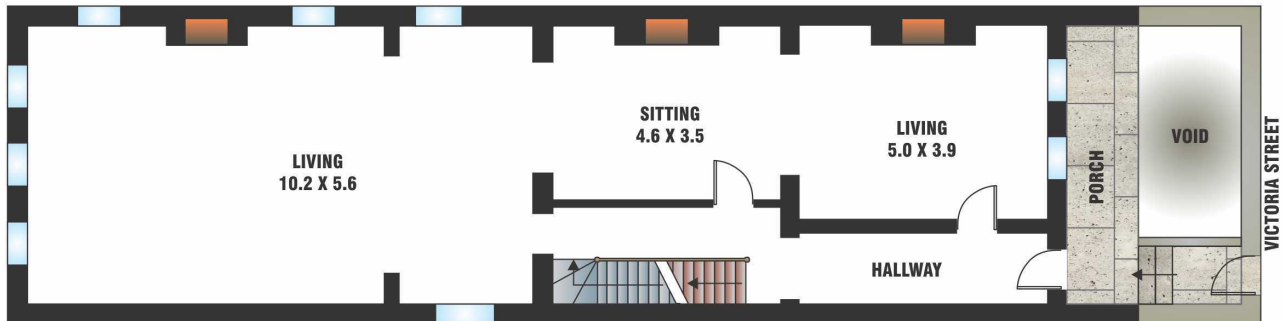
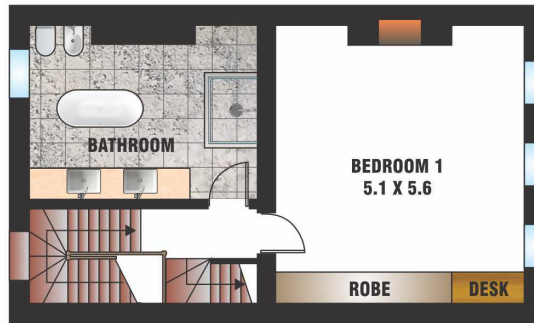
Jason Boon 0418 671 494

Geoff Cox 0418 231 004

Joss Reid 0414 662 391

Proudly Richardson & Wrench

Richardson & Wrench Elizabeth Bay / Potts Point
02 8356 2700



FLOOR PLAN BY BORTEX PTY LTD PH: 0414 922 679

"The information contained herein has been provided by our Principal and third parties, which we merely pass on without any representation or warranty given, intended or implied by us as to its correctness and with no liability accepted by us in this regard. You must rely on your own inquiries as to its accuracy or otherwise."