



1/4 Billyard Avenue ELIZABETH BAY, NSW

3 bed | 2 bath | 1 car

An uninterrupted vista across Sydney Harbour grants a sparkling atmosphere to this exceptional 3-bed waterfront apartment set on dress-circle Billyard Ave, one of Sydney's most sought-after enclaves. Positioned in 'Grandview' and imbued with the famed direct-harbourfront ambience of this superb building, it offers spacious interiors and a NE-facing sunny terrace, a beautiful spot to take in the privileged panorama on offer.

Boasting a perfectly peaceful position with near-level ...

R&W

rwebay.com.au/6437445

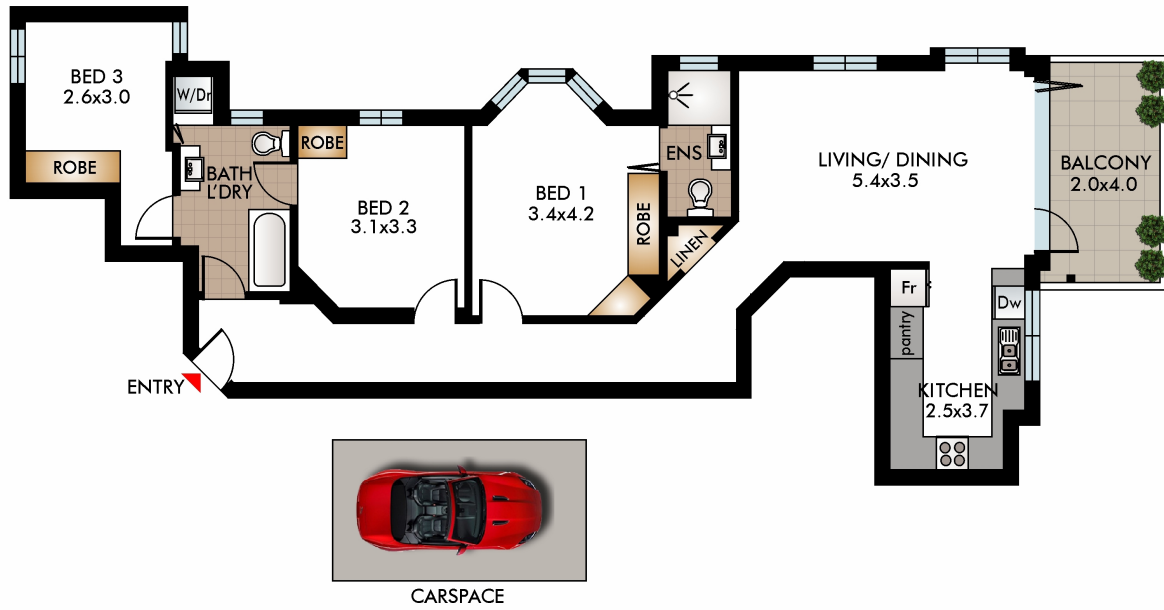
Jason Boon 0418 671 494

Geoff Cox 0418 231 004

Joss Reid 0414 662 391

Proudly Richardson&Wrench

Richardson & Wrench Elizabeth Bay / Potts Point
02 8356 2700



This diagram is for illustrative purpose only. All reasonable care has been taken in the preparation, but no warranty is given to the accuracy of the information. This document does not constitute any part of any offer or contract. Dimensions shown are approximate only. Prospective purchasers must rely on their own enquiries.

