



## 23 Hughes Street POTTS POINT, NSW

13 bed | 12 bath

Nestled in a much sought after pocket of Potts Point is this enormous, freestanding 3 level house on approx. 284sqm of prime real estate with a coveted north rear aspect.

Packed with potential, and located only moments to the heart of Potts Point, this is a rare chance to secure a unique foothold in a blue ribbon suburb.

Poised for a creative design and renovation, this class...

# R&W

[rwebay.com.au/6459318](http://rwebay.com.au/6459318)

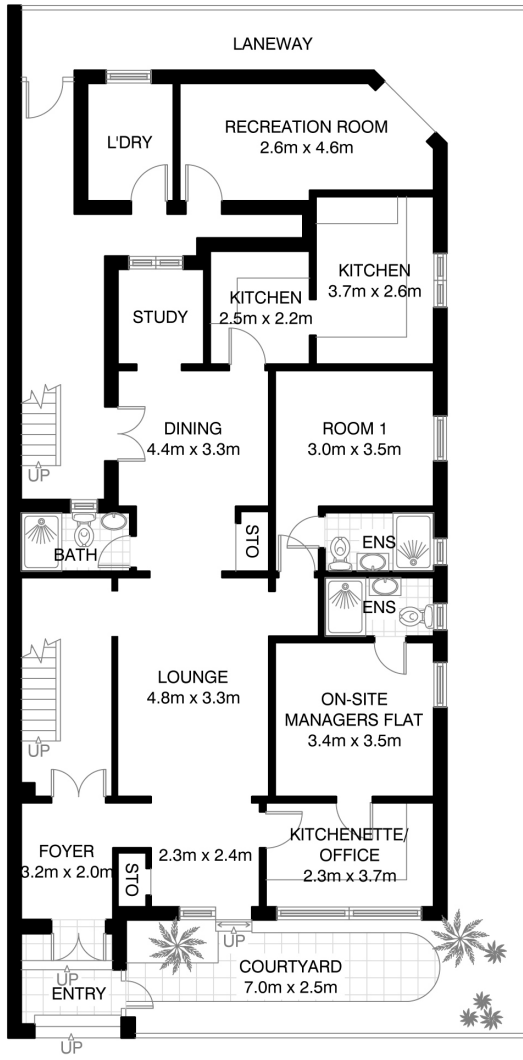
Jason Boon 0418 671 494

Geoff Cox 0418 231 004

Joss Reid 0414 662 391

**Proudly Richardson&Wrench**

Richardson & Wrench Elizabeth Bay / Potts Point  
02 8356 2700

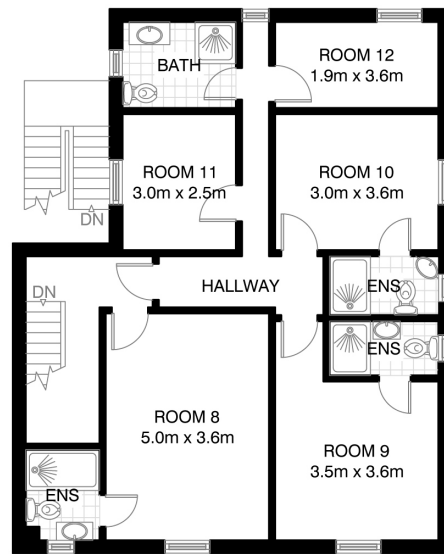


GROUND FLOOR

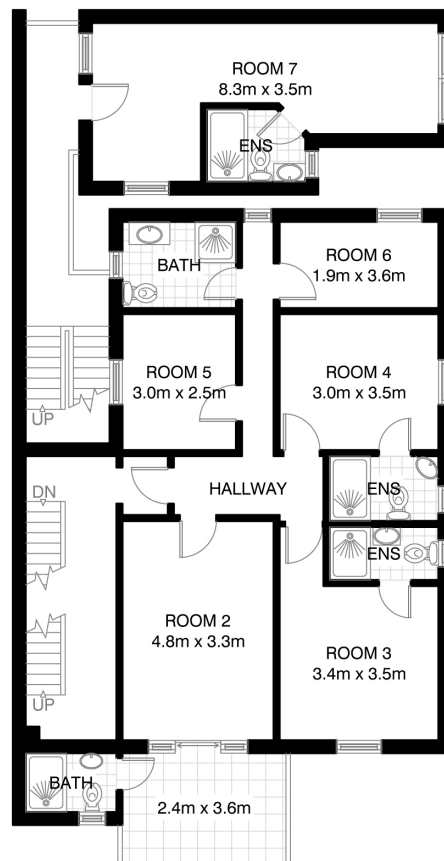


## POTTS POINT 23 HUGHES ST

\*INTERNAL FLOOR AREA APPROX 380m<sup>2</sup>



SECOND FLOOR



FIRST FLOOR

\*PLANS SHOWN ONLY INDICATIVE OF LAYOUT. DIMENSIONS ARE APPROXIMATE.

Floor plan supplied by V-Mark Design Pty Ltd. This floor plan is provided for indicative purposes only.

Measurements are approximate and not to scale. The vendor, agency and supplier will accept no liability for its accuracy. Interested parties are advised to make their own independent enquiries.