



6/7 Springfield Avenue POTTS POINT, NSW

2 bed | 1 bath

R&W

Available to Inspect by Private Appointment

rwebay.com.au/6466595

Jason Boon 0418 671 494

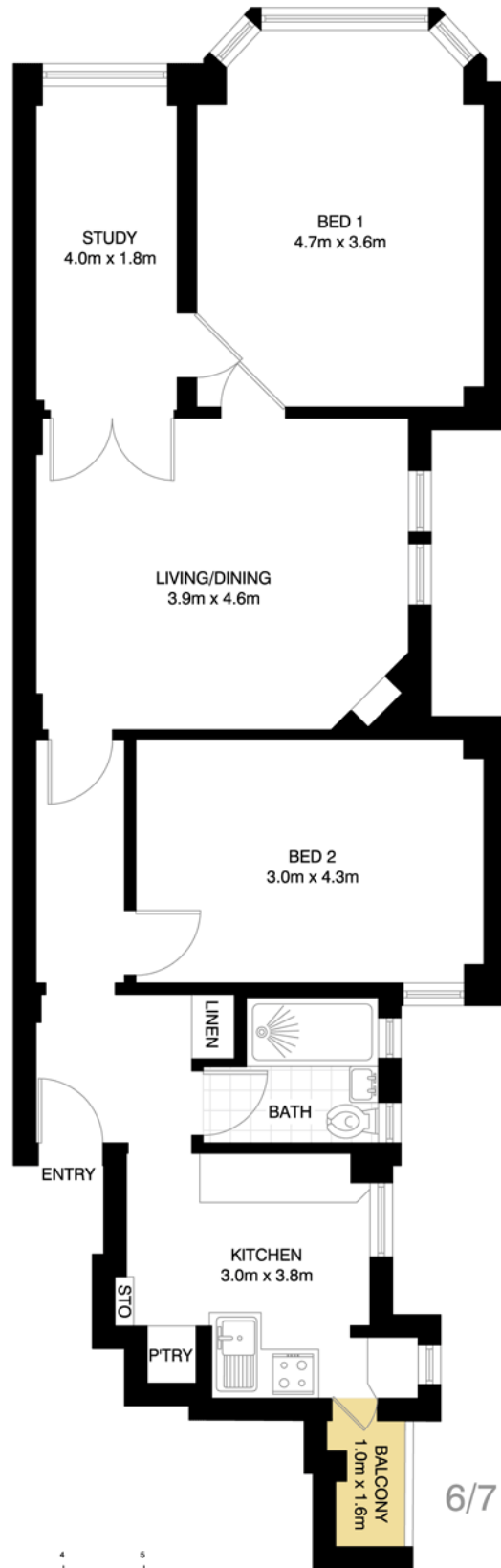
Geoff Cox 0418 231 004

Joss Reid 0414 662 391

- Set in classic 'Carinthia', elegant 'London' ambience
- Famed security block, superb Deco common areas
- Light-filled main bedroom w bay window, cosy 2nd
- Gas kitchen w stone benches, d/washer, mod bathroom
- Flex-use study/office, a great work-from-home space
- High ceilings, ornate ceilings, Deco lines throughout
- Shared laundry, common rooftop with stunning views

Proudly Richardson & Wrench

Richardson & Wrench Elizabeth Bay / Potts Point
02 8356 2700



POTTS POINT
6/7 SPRINGFIELD AVENUE



*PLANS SHOWN ONLY INDICATIVE OF LAYOUT. DIMENSIONS ARE APPROXIMATE.
Floor plan supplied by V-Mark Design Pty Ltd. This floor plan is provided for indicative purposes only.
Measurements are approximate and not to scale. The vendor, agency and supplier will accept no liability for its accuracy. Interested parties are advised to make their own independent enquiries.