

2/14 Rockwall Crescent Potts Point, NSW

3 bed | 2 bath

A serene and sunlit haven in an elite Potts Point cul-d...

R&W

Auction Thursday, 31st October 6:00 - On Site

Open Thursday, 26th September 2024 5:30 - 6:00

rwebay.com.au/7999931

Jason Boon 0418 671 494

Geoff Cox 0418 231 004

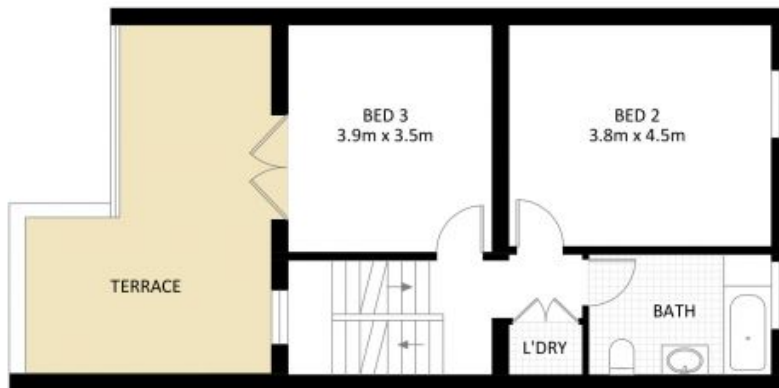
Joss Reid 0414 662 391

Proudly Richardson&Wrench

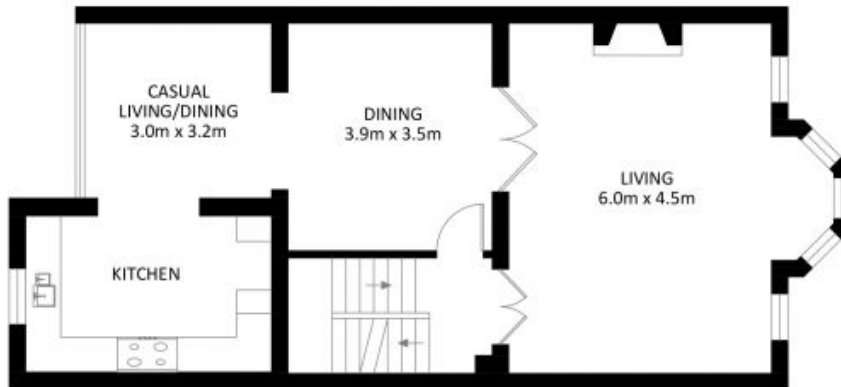
Richardson & Wrench Elizabeth Bay / Potts Point
02 8356 2700



ATTIC



SECOND FLOOR



FIRST FLOOR



GROUND FLOOR

2/14 Rockwall Crescent, Potts Point

*PLANS SHOWN ONLY INDICATIVE OF LAYOUT. DIMENSIONS ARE APPROXIMATE.

Measurements are approximate and not to scale. The vendor, agency and supplier will accept no liability for its accuracy. Interested parties are advised to make their own independent enquiries.

