



1/96 Elizabeth Bay Road Elizabeth Bay, NSW

1 bed | 1 bath

A Distinctive Art Deco Gem by Architect Aaron Bolot

A unique opportunity in the coveted Loop of Elizabeth Bay, nestled within the prestigious 'Ashdown'. This spacious (approximately 60m²) one-bedroom apartment is set in the front building, offering a prime position in a renowned P&O architecture style. Designed by the esteemed architect Aaron Bolot, this residence is surrounded by a beautiful garden and meticulously maintained common areas, adding to its allure.

As you step inside, discover an impeccably designed spa...

R&W

rwebay.com.au/8002996

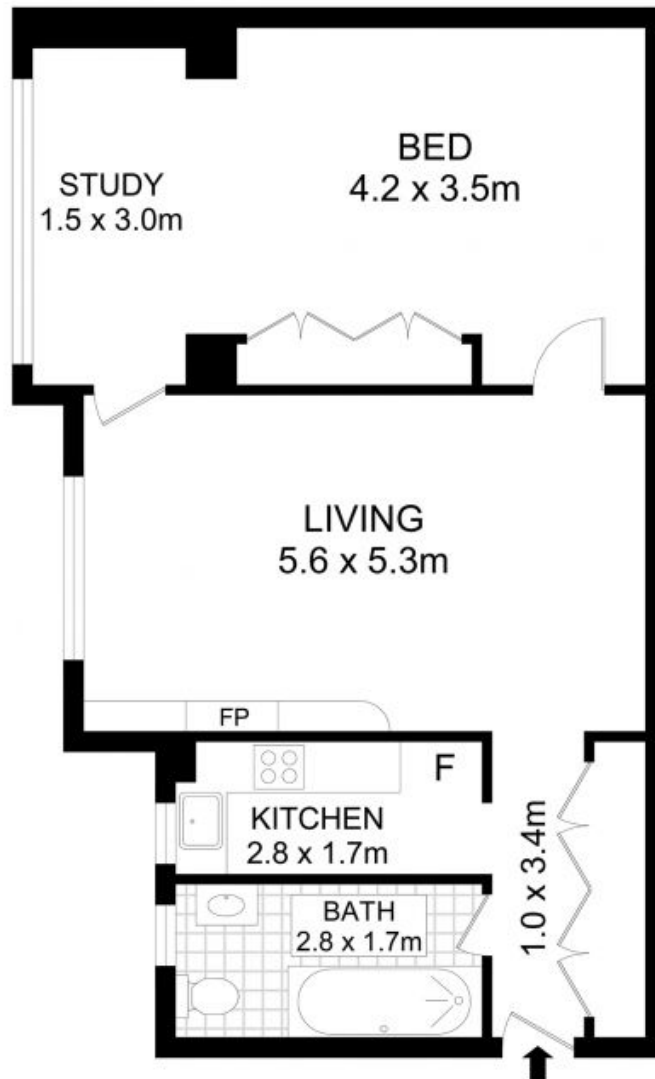
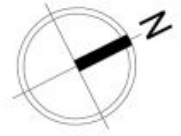
Penny Timothy 0418 546 500

Luke McDonnell 0418 844 110

Greg McKinley 0412 044 822

Proudly Richardson&Wrench

Richardson & Wrench Elizabeth Bay / Potts Point
02 8356 2700



1/96 Elizabeth Bay Road, Elizabeth Bay

Disclaimer

Floor Plan measurements are approximate and are for illustrative purposes only. While we cannot doubt the floor plans accuracy, we make no guarantee, warranty or representation as to the accuracy and completeness of the floor plan.