



## 309/161 Brougham Street Potts Point, NSW

2 bed | 2 bath | 1 car

**R&W**

Conveniently located in the city fringe on a street away from Potts Point trendy lifestyle, IDA is one of the most visionary re-imaginings of a heritage gem in local market.

Perched high on a sandstone cliff, this stunning loft space with direct lift access from basement to apartment is situated in a heritage conversion overlooking Sydney Harbour & CBD, expertly crafted by SJB Interiors with quality fixtures & finishes including marble kitchen & bathrooms, air-con and built in wardrobes and wrap around glass.

?Heritage conversion apartment spanning over two levels...

**[rwebay.com.au/8037283](https://rwebay.com.au/8037283)**

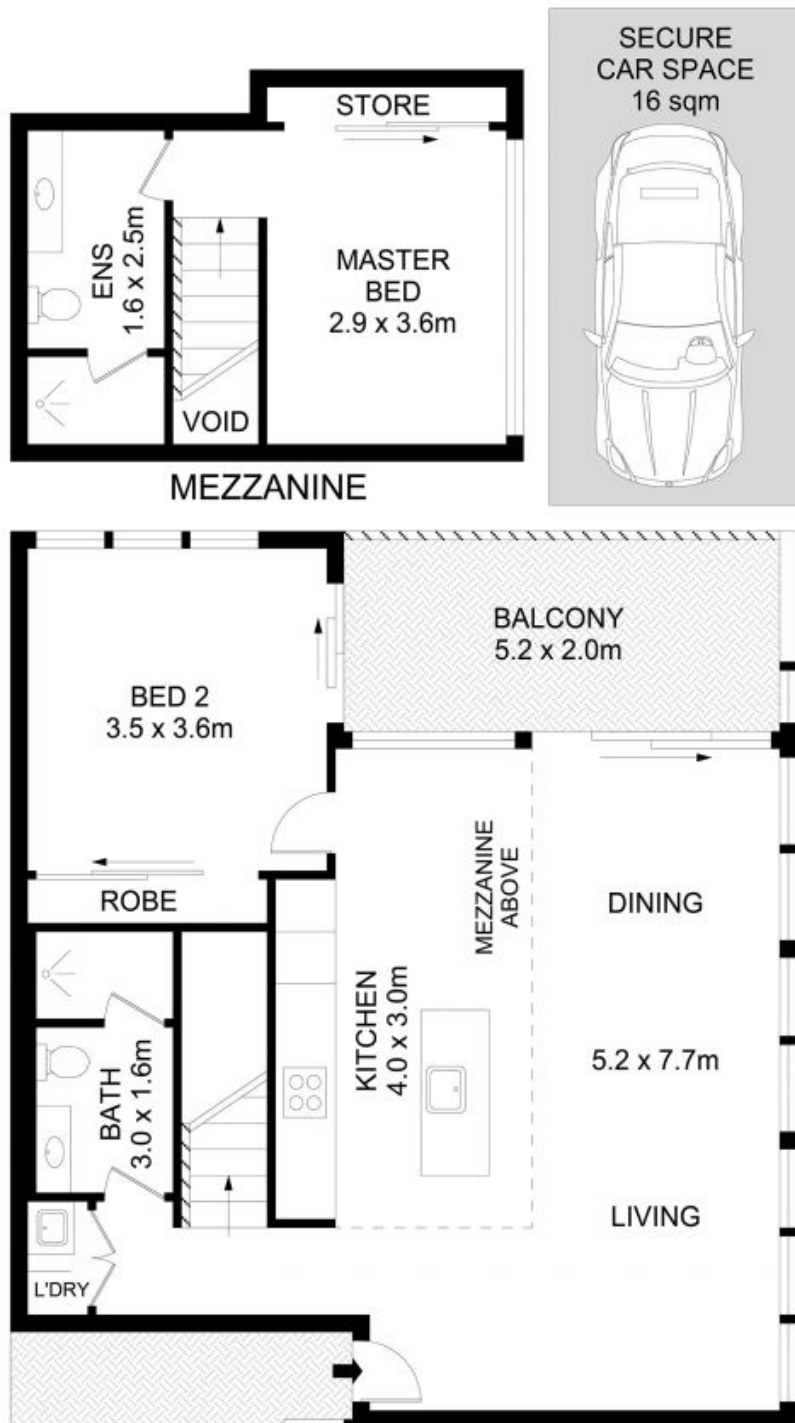
Angelo Bouras 0401 658 653

Thomas Arthurs 0414 026 412

**Proudly Richardson&Wrench**

Richardson & Wrench Elizabeth Bay / Potts Point  
02 8356 2700

STORAGE



309/161 Brougham Street, Potts Point

Disclaimer

Floor Plan measurements are approximate and are for illustrative purposes only. While we cannot doubt the floor plans accuracy, we make no guarantee, warranty or representation as to the accuracy and completeness of the floor plan.

Every precaution has been taken to establish accuracy of the information in this brochure but does not constitute any representation by the vendor or agent.

**R&W**