



511/28 Macleay Street Elizabeth Bay, NSW

| 1 bath

Short term rental permitted

Located on the 5th floor of the Macleay Apartments security building, this stylish studio offers stunning views of the city skyline and Harbour Bridge with its premier location. Surrounded by vibrant restaurants, shops, and entertainment venues, it provides unparalleled convenience. With amenities including an outdoor pool, two lifts, and secure entry, this studio is an attractive choice for investors or as a secure city base.

R&W

Open Saturday, 16th November 2024 12:15 - 12:45

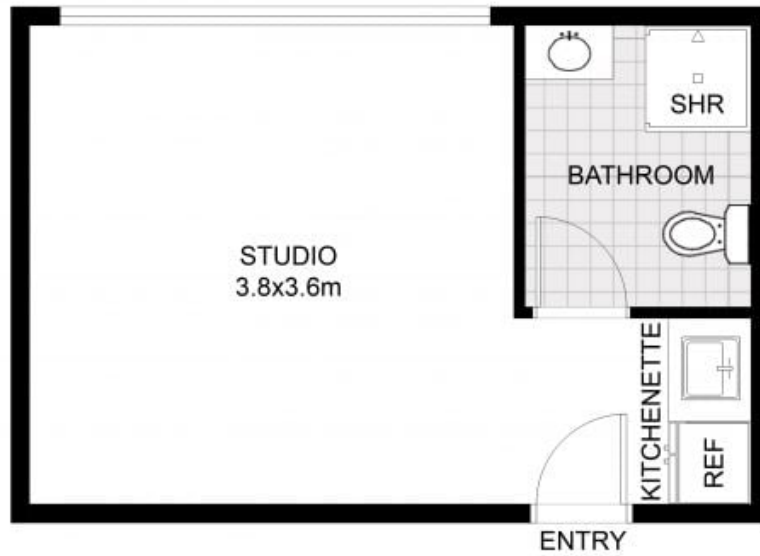
rwebay.com.au/8066422

Angelo Bouras 0401 658 653

Thomas Arthurs 0414 026 412

Proudly Richardson&Wrench

Richardson & Wrench Elizabeth Bay / Potts Point
02 8356 2700



FLOOR PLAN

This floor plan including furniture, fixture measurements and dimensions are approximate and for illustrative purposes only. BoxBrownie.com gives no guarantee, warranty or representation as to the accuracy and layout. All enquiries must be directed to the agent, vendor or party representing this floor plan.



511/28 Macleay Street Potts Point