



9/41-49 Roslyn Gardens Elizabeth Bay, NSW

2 bed | 2 bath

R&W

This beautifully positioned corner apartment, nestled within the recently refurbished Bayview Towers, exudes a bright and airy ambiance in its living and dining spaces. Perfectly situated for unparalleled convenience, it epitomises lifestyle and park-side living at its finest. Bathed in natural light, the apartment features floor-to-ceiling windows that offer views of Rushcutters Bay Park and the surrounding district, positioning residents to fully embrace the neighbourhood's highlights. Complete with an internal laundry this residence ticks a lot of boxes for idyllic city-side living.

? Stunning timber flooring ...

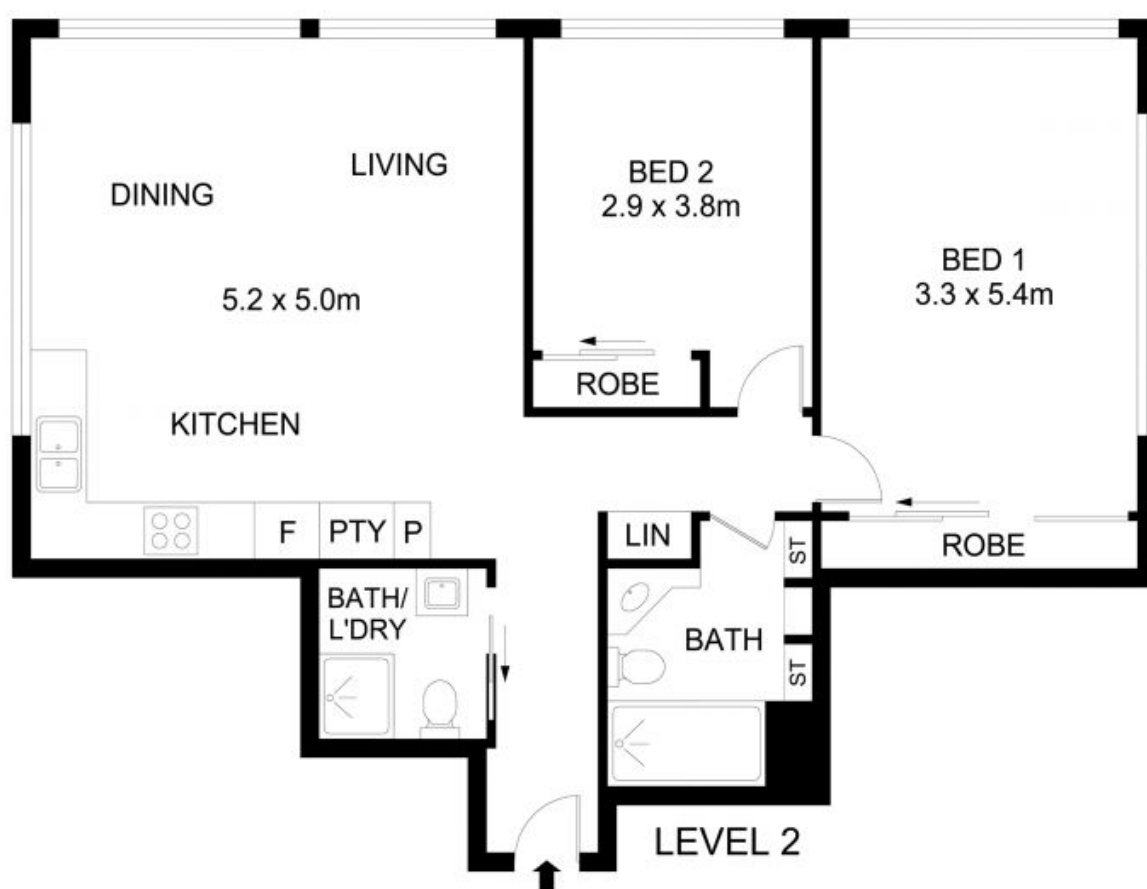
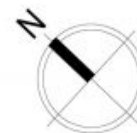
rwebay.com.au/8076295

Angelo Bouras 0401 658 653

Thomas Arthurs 0414 026 412

Proudly Richardson&Wrench

Richardson & Wrench Elizabeth Bay / Potts Point
02 8356 2700



9/41 Roslyn Gardens, Rushcutters Bay

Disclaimer

Floor Plan measurements are approximate and are for illustrative purposes only. While we cannot doubt the floor plans accuracy, we make no guarantee, warranty or representation as to the accuracy and completeness of the floor plan.