



29 Challis Avenue Potts Point, NSW

4 bed | 4 bath | 3 car

R&W

Experience the epitome of luxury living at "Saraville," an exquisite 3-level, 4-bedroom freestanding masterpiece in the heart of Potts Point. Built c1890 in the Italianate style and renovated in recent years to absolute perfection, the coming-to-market of this iconic home offers a landmark opportunity to own one of the finest houses in this famed village locale, complete with LUG parking for 3 cars.

With a grand 9.15m frontage, the home welcomes you thro...

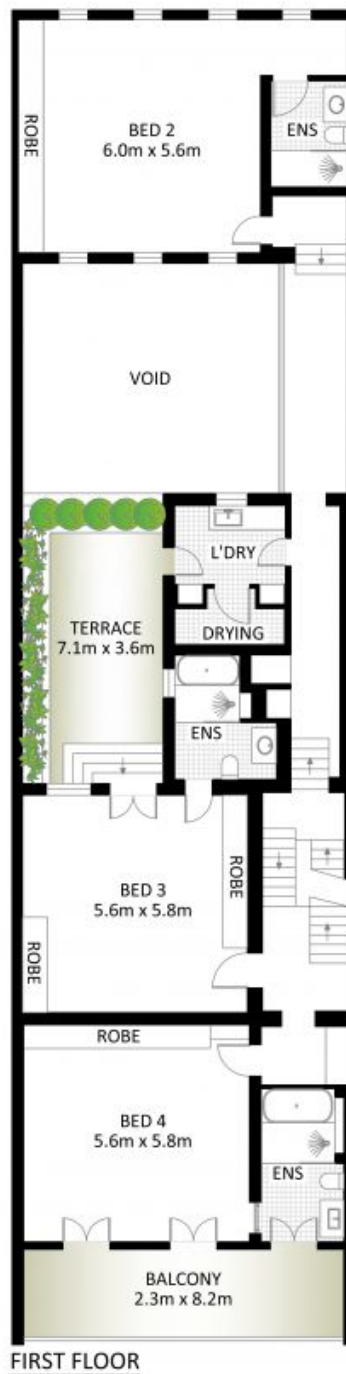
rwebay.com.au/8087847

Jason Boon 0418 671 494

Geoff Cox 0418 231 004

Proudly Richardson&Wrench

Richardson & Wrench Elizabeth Bay / Potts Point
02 8356 2700

R&WElizabeth Bay / Potts Point
8356 2700

Internal Area : Approx. 475m²
 External Area : Approx. 160m²
 Total Area : Approx. 635m²

0 1 2 3 4 5 SCALE (METRES)

29 Challis Avenue, Potts Point

*PLANS SHOWN ONLY INDICATIVE OF LAYOUT. DIMENSIONS ARE APPROXIMATE.

Measurements are approximate and not to scale. The vendor, agency and supplier will accept no liability for its accuracy. Interested parties are advised to make their own independent enquiries.

Every precaution has been taken to establish accuracy of the information in this brochure but does not constitute any representation by the vendor or agent.

R&W