



## 1/18 Onslow Avenue Elizabeth Bay, NSW

1 bed | 1 bath

- Charming 1-bedroom home steps to harbour
- Private garden setting, revered Deco building
- Generous living flows to garden-view balcony
- Balcony overlooks garden, harbour glimpses
- Excellent sunny space, lovely sense of serenity
- N-facing bedroom, b/in robes, neat ensuite
- Modern kitchen, adjacent study/dining nook
- Good condition w/ scope to update (STCA)
- Fine Art Deco building, ample period touches

# R&W

Open Thursday, 19th September 2024 10:00 - 10:30

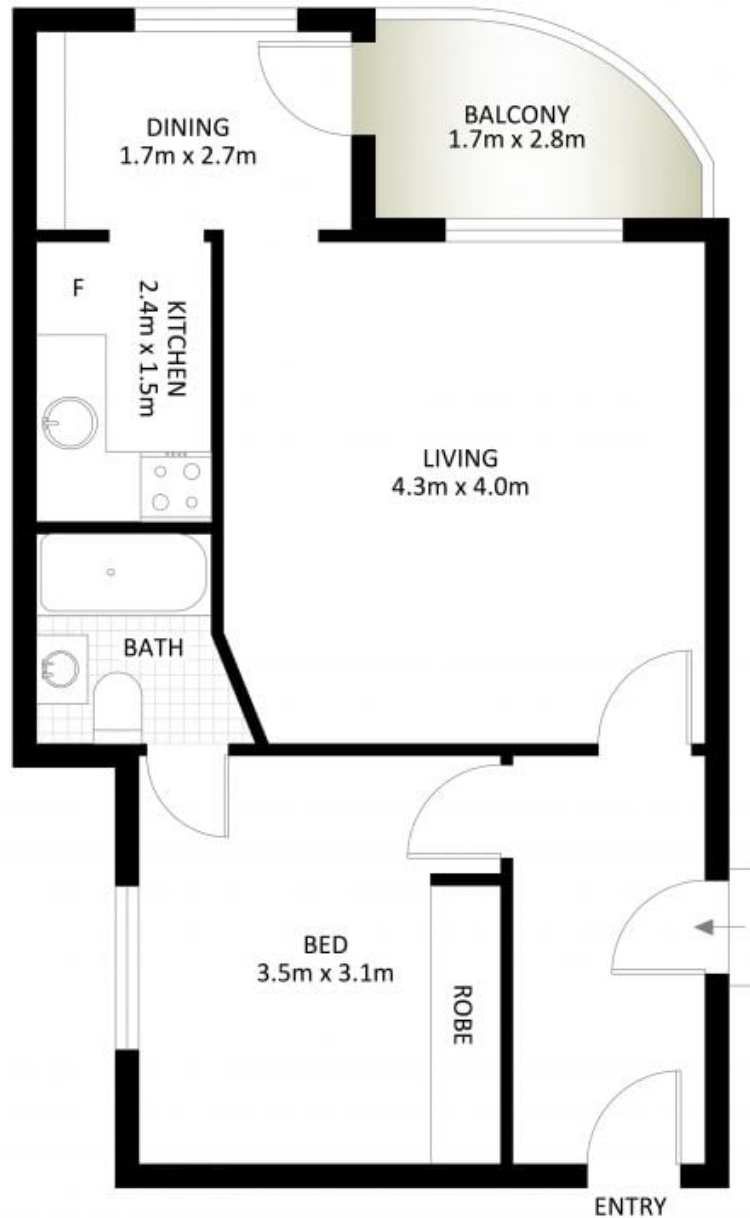
[rwebay.com.au/8115610](https://rwebay.com.au/8115610)

Joss Reid 0414 662 391

Geoff Cox 0418 231 004

**Proudly Richardson&Wrench**

Richardson & Wrench Elizabeth Bay / Potts Point  
02 8356 2700



## 1/18 Onslow Avenue, Elizabeth Bay

\*PLANS SHOWN ONLY INDICATIVE OF LAYOUT. DIMENSIONS ARE APPROXIMATE.

Measurements are approximate and not to scale. The vendor, agency and supplier will accept no liability for its accuracy. Interested parties are advised to make their own independent enquiries.