



12/317-319 Edgecliff Road Woollahra, NSW

2 bed | 1 bath | 1 car

A perfect reflection of its upmarket Woollahra address, this multi-level townhouse is a rare find. Due northern sunlight and panoramic district views illuminate the versatile interiors, while a peaceful garden will see you entertain or relax alfresco.

Promising a laidback cosmopolitan lifestyle, you're less than a kilometres stroll from Queen Street Village, Woollahra Public School, Edgecliff shopping centre and the station.

- Functional floorplan flows between formal/casual zones

Outgoings (approx.)...

R&W

Auction Thursday, 3rd October 6:00 - On Site

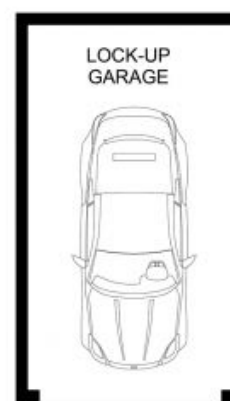
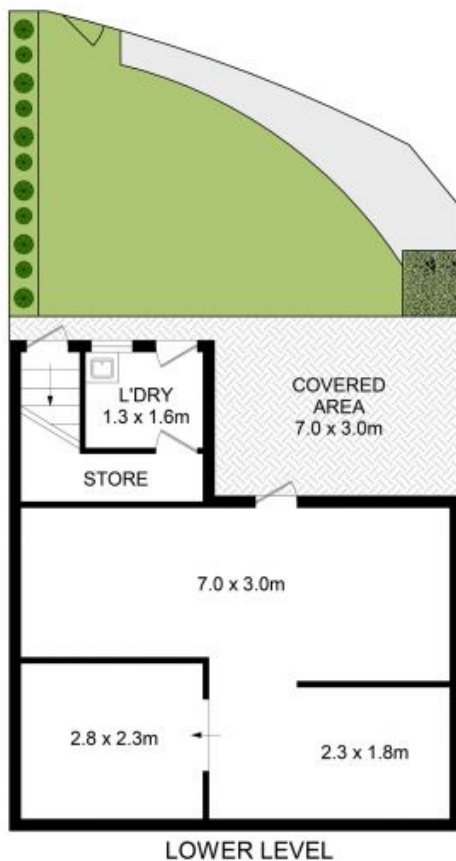
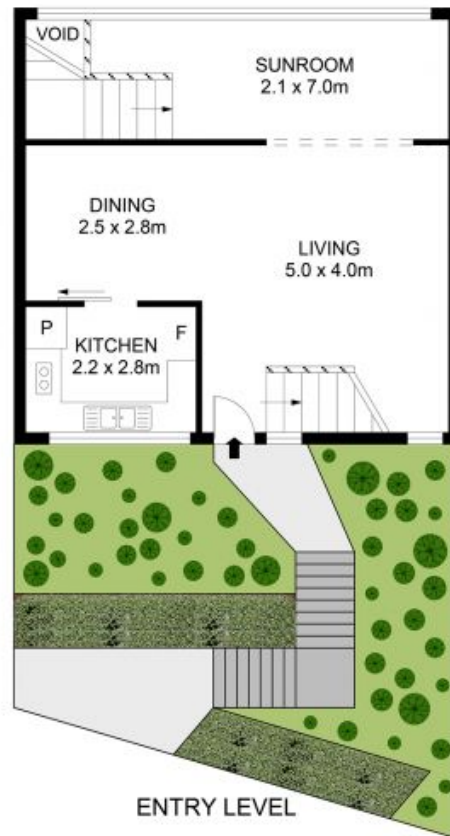
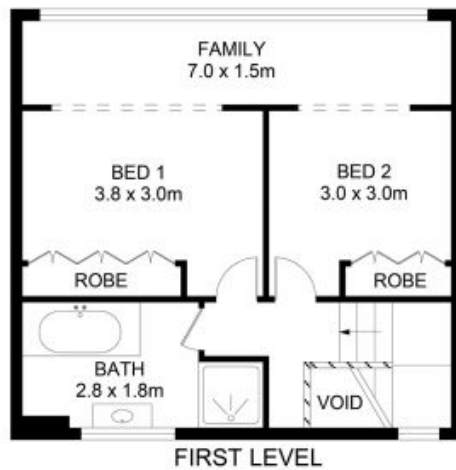
[realestate.com.au/8117090](https://www.realestate.com.au/8117090)

Greg McKinley 0412 044 822

Andrew Hoggett 0412 208 614

Proudly Richardson&Wrench

Richardson & Wrench Elizabeth Bay / Potts Point
02 8356 2700



12/317-319 Edgecliff Road, Woollahra



Disclaimer

Floor Plan measurements are approximate and are for illustrative purposes only. While we cannot doubt the floor plans accuracy, we make no guarantee, warranty or representation as to the accuracy and completeness of the floor plan.

Every precaution has been taken to establish accuracy of the information in this brochure but does not constitute any representation by the vendor or agent.

R&W