



## 17/10a Challis Avenue Potts Point, NSW

| 1 bath

Nestled amidst Potts Point's vibrant bustling scene, this studio presents an excellent opportunity for those seeking a top-tier Art Deco residence. Located in a tranquil section of the building, it offers a generously proportioned main room with ample storage, a kitchen featuring gas cooking facilities, and a bathroom with a spacious bathtub. Residents can unwind on the common rooftop entertainment area, which boasts breath taking city views.

High ceilings and timber floors throughout

...

# R&W

Open Saturday, 21st September 2024 1:00 - 1:30

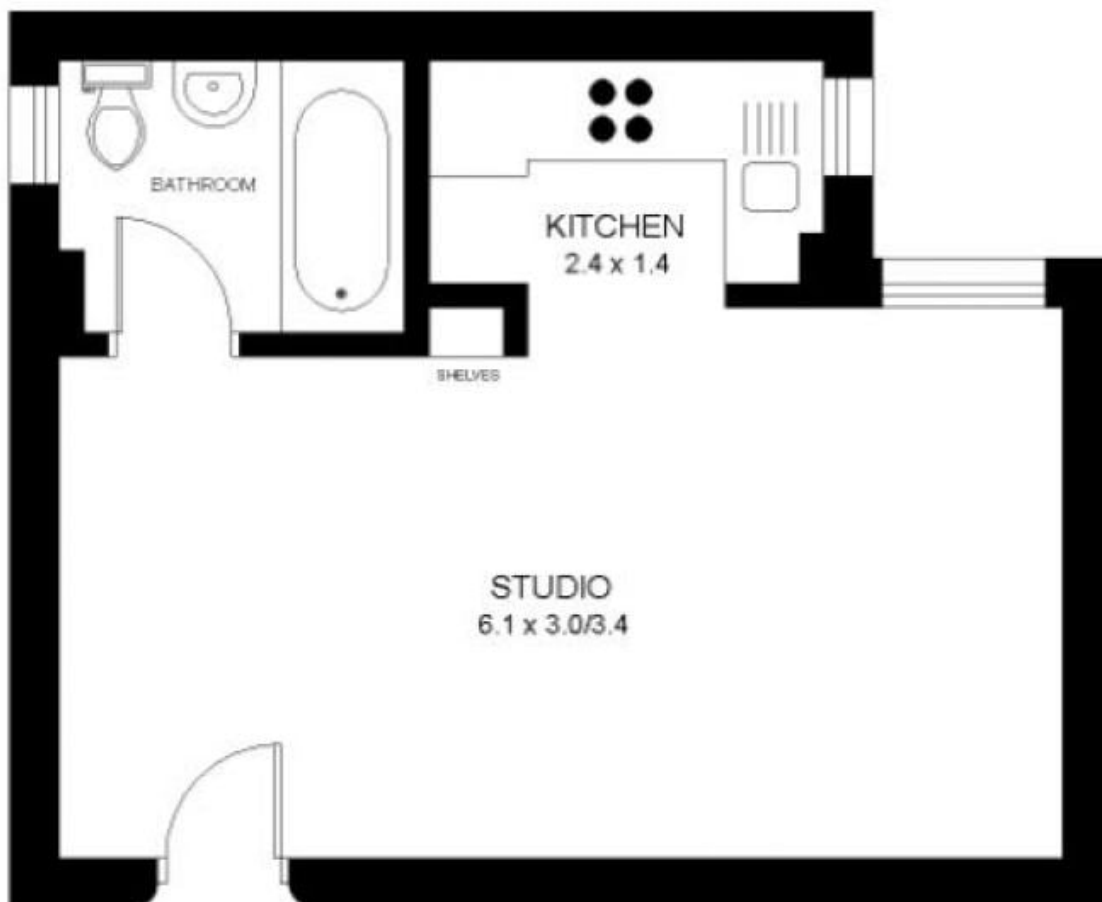
[rwebay.com.au/8120659](https://www.rwebay.com.au/8120659)

Angelo Bouras 0401 658 653

Thomas Arthurs 0414 026 412

**Proudly Richardson&Wrench**

Richardson & Wrench Elizabeth Bay / Potts Point  
02 8356 2700



PLANS ARE INDICATIVE OF LAYOUT AND SHOULD NOT BE TAKEN AS AN EXACT REPRESENTATION OF THE PROPERTY. DIMENSIONS AND ASPECT ARE APPROXIMATE

17/10A CHALLIS AVENUE

POTTS POINT

Every precaution has been taken to establish accuracy of the information in this brochure but does not constitute any representation by the vendor or agent.

**R&W**