



## 3/93 Elizabeth Bay Road Elizabeth Bay, NSW

3 bed | 2 bath | 2 car

**R&W**

With the magnificent harbour at your fingertips, this house-sized apartment presents an exceptional chance in the lush curated grounds of prestigious Elizabeth Bay address, 'Kincoppal'. The sprawling gated estate occupies a vast stretch of prized harbour frontage, with phenomenal gardens, resort-style facilities, and concierge service delivering residents a secure environment of peace, privacy, and unrivalled beauty.

Nestled on the 2nd floor of the North Tower, a coveted ...

Open Saturday, 21st September 2024 1:00 - 1:30

[rwebay.com.au/8128332](https://www.rwebay.com.au/8128332)

Jason Boon 0418 671 494

Geoff Cox 0418 231 004

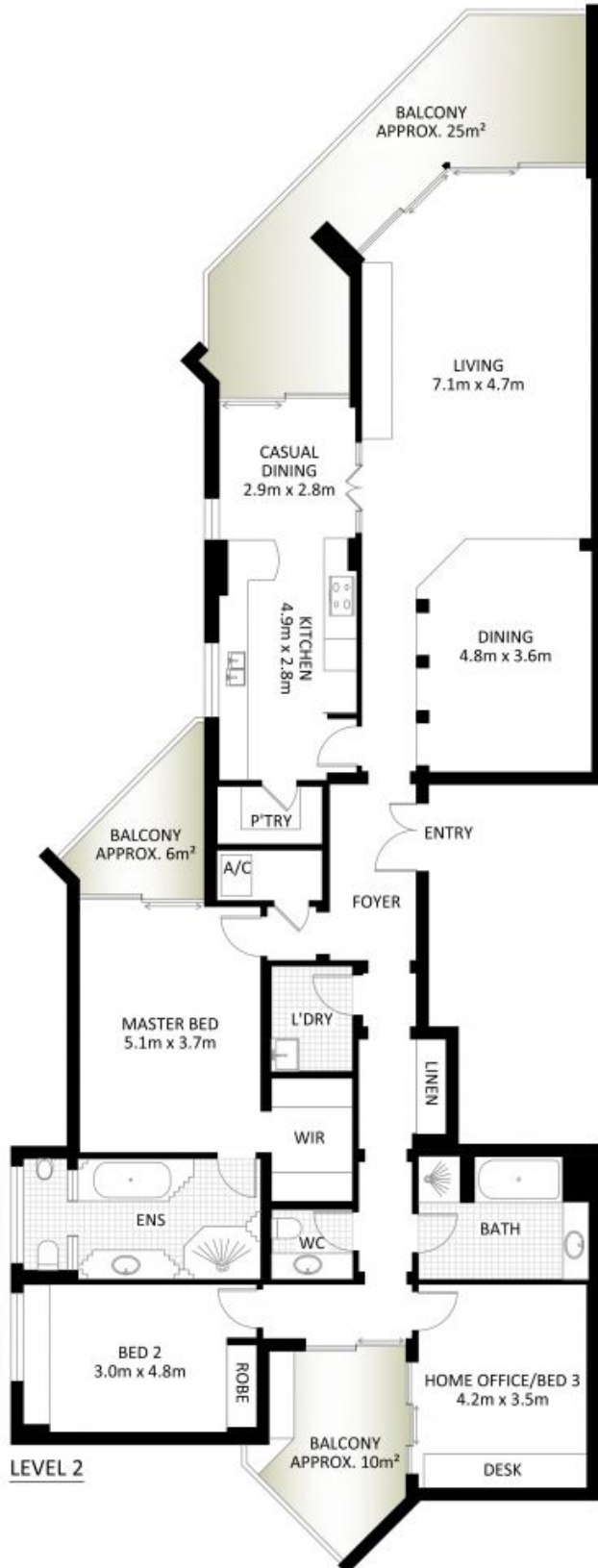
Joss Reid 0414 662 391

**Proudly Richardson&Wrench**

Richardson & Wrench Elizabeth Bay / Potts Point  
02 8356 2700

**R&W**

Elizabeth Bay / Potts Point  
8356 2700



### 3/93 Elizabeth Bay Road, Elizabeth Bay

\*PLANS SHOWN ONLY INDICATIVE OF LAYOUT. DIMENSIONS ARE APPROXIMATE.

Measurements are approximate and not to scale. The vendor, agency and supplier will accept no liability for its accuracy. Interested parties are advised to make their own independent enquiries.



Every precaution has been taken to establish accuracy of the information in this brochure but does not constitute any representation by the vendor or agent.

**R&W**