



12/7 Springfield Avenue Potts Point, NSW

2 bed | 1 bath

Positioned quietly at the rear of one Potts Point's most timeless Art Deco buildings: 'Carinthia', is this bespoke 2 bedroom plus versatile sunroom / study space with tree scape surrounds and city glimpses.

Set on an sophisticated tree lined avenue, it is right in the heart of Sydney's mini Manhattan, a urban hotbed of art, culture and entertainment.

- Soaring high ceilings throughout, flexible floorplan
- Smart Home with projector/music, including a voice activated and remote-controlled fireplace
- Fully equipped kitchen with grand floating island ben...

R&W

Auction Thursday, 24th October 6:00 - On Site

Open Thursday, 17th October 2024 1:00 - 1:30

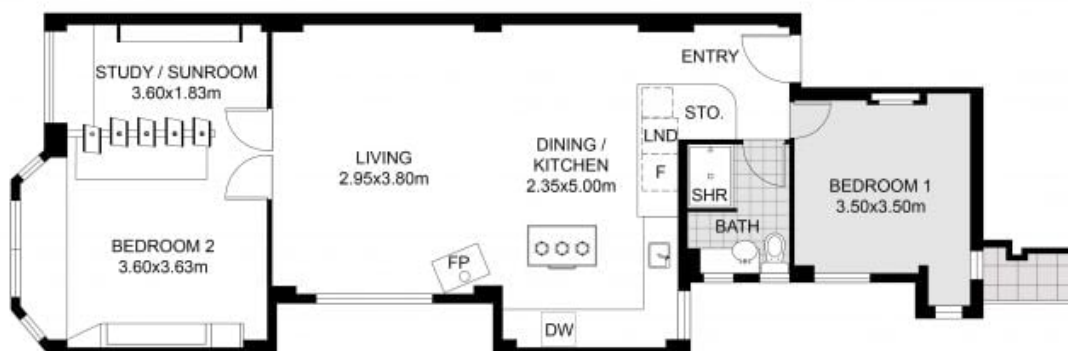
rwebay.com.au/8138326

Angelo Bouras 0401 658 653

Thomas Arthurs 0414 026 412

Proudly Richardson&Wrench

Richardson & Wrench Elizabeth Bay / Potts Point
02 8356 2700



FLOOR PLAN

This floor plan including furniture, fixture measurements and dimensions are approximate and for illustrative purposes only. Richardson and Wrench gives no guarantee, warranty or representation as to the accuracy and layout. All enquiries must be directed to the agent, vendor or party representing this floor plan.

12/7 Springfield Avenue, Potts Point

