



## Studios/76 Elizabeth Bay Road Elizabeth Bay, NSW

| 1 bath

**R&W**

Fabulous studio apartment perfectly located at the entrance to the prestigious loop of Elizabeth Bay Road. In a low maintenance security building it offers the perfect entry point to the Sydney market or easy investment opportunity.

- > Fabulous natural light
- > Modernised kitchen & bathroom
- > Building with communal laundry & roofdeck
- > Rent potential \$450 per week
- > Transport & shops at doorstep

Outgoings (approx.)...

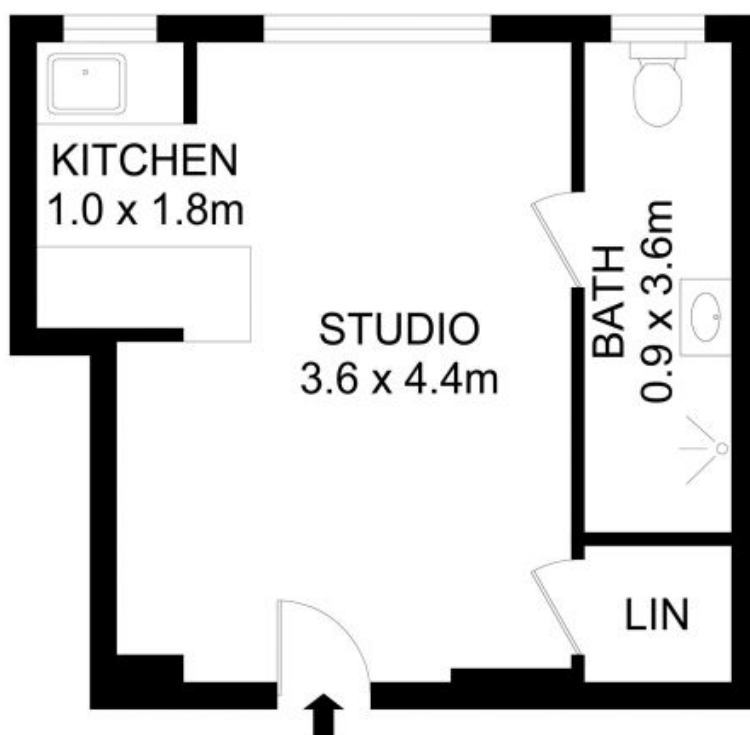
Open Saturday, 16th November 2024 9:00 - 9:30

**[rwebay.com.au/8147922](http://rwebay.com.au/8147922)**

Greg McKinley 0412 044 822

**Proudly Richardson&Wrench**

Richardson & Wrench Elizabeth Bay / Potts Point  
02 8356 2700



2/76 Elizabeth Bay Road, Elizabeth Bay

**Disclaimer**

Floor Plan measurements are approximate and are for illustrative purposes only. While we cannot doubt the floor plans accuracy, we make no guarantee, warranty or representation as to the accuracy and completeness of the floor plan