



77/5-7 Esplanade Elizabeth Bay, NSW

| 1 bath | 1 car

Well presented strata apartment, opposite Beare Park & the Harbour front of Elizabeth Bay. The bright space is situated at the quiet rear of the sought-after "Karingal" building, overlooking the sunny outdoor pool and barbecue terrace. Complete with parking on title it offers the perfect city/harbourside base or quality investment.

- Seventh Floor position with secure lift access.
- Quiet rear corner with abundant light
- Tidy kitchen and bathroom with Gas cooktop

Approx Outgoings:...

R&W

Open Saturday, 16th November 2024 10:45 - 11:15

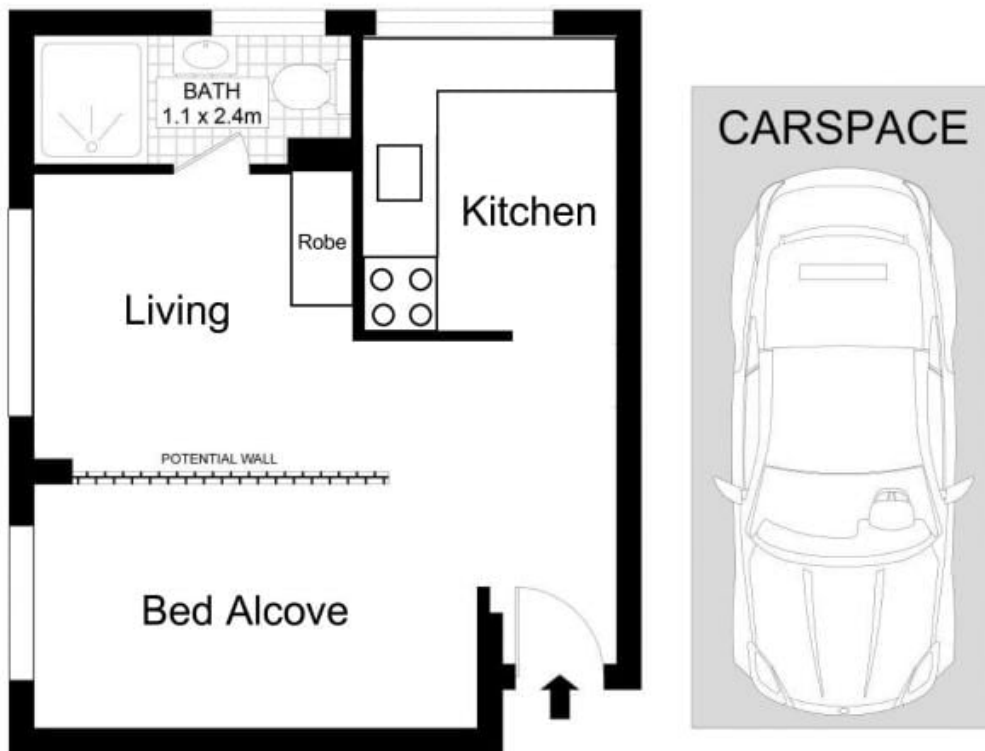
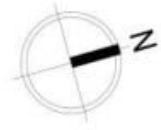
[rwebay.com.au/8153673](https://www.rwebay.com.au/8153673)

Angelo Bouras 0401 658 653

Thomas Arthurs 0414 026 412

Proudly Richardson&Wrench

Richardson & Wrench Elizabeth Bay / Potts Point
02 8356 2700



77/5-7 Esplanade, Elizabeth Bay

Disclaimer
Floor Plan measurements are approximate and are for illustrative purposes only. While we cannot doubt the floor plans accuracy, we make no guarantee, warranty or representation as to the accuracy and completeness of the floor plan.

Every precaution has been taken to establish accuracy of the information in this brochure but does not constitute any representation by the vendor or agent.

