



1/41-49 Roslyn Gardens Elizabeth Bay, NSW

2 bed | 2 bath

R&W

- 2 mins to harbourside Rushcutters Bay Park
- NE-facing, bright L-shaped living/dining area
- Floor-to-ceiling windows in each main room
- Modern kitchen with stone benches, dishwasher
- Spacious main bedroom, large built-in robes
- Quiet 2nd bedroom, both with wide windows
- Main bathroom with bath, 2nd with laundry
- Good condition, scope to update (STCA)
- On-site manager, outdoor pool, lift access

in conjunction with...

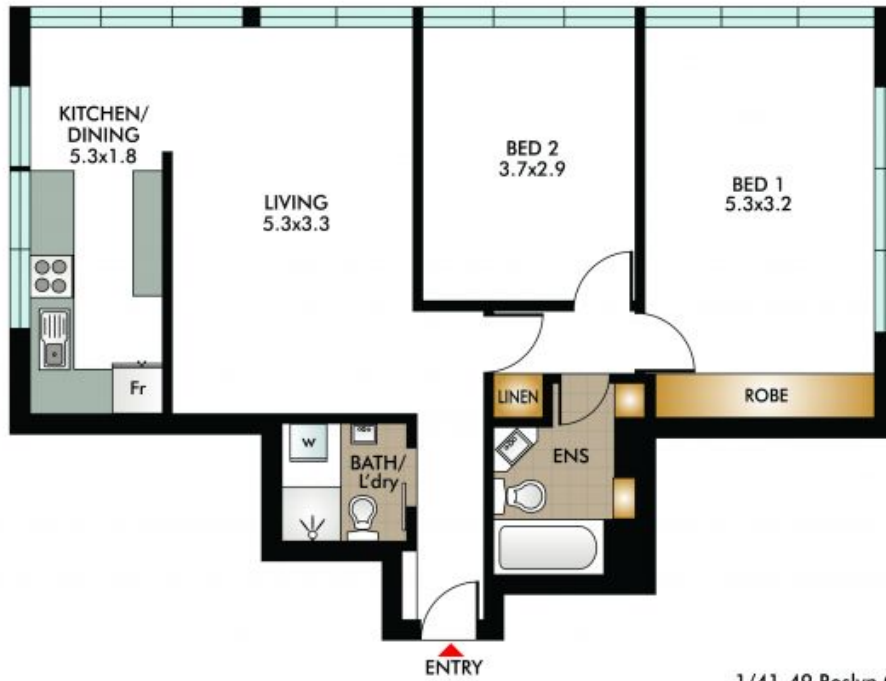
rwebay.com.au/8153887

Luke McDonnell 0418 844 110

Penny Timothy 0418 546 500

Proudly Richardson&Wrench

Richardson & Wrench Elizabeth Bay / Potts Point
02 8356 2700



1/41-49 Roslyn Gardens, Elizabeth Bay

This diagram is for illustrative purpose only. All reasonable care has been taken in the preparation, but no warranty is given to the accuracy of the information. This document does not constitute any part of any offer or contract. Dimensions shown are approximate only. Prospective purchasers must rely on their own enquiries.

