



## 21/12 Wylde Street Potts Point, NSW

1 bed | 1 bath

- 1-bed apartment in iconic c1959 building
- Set at the leafy Northern end of Potts Point
- Security building, upgraded lobby and lifts
- High ceilings, timber flooring, breezy layout
- Open-plan living/dining, bedroom w/ b-ins
- Sunlit kitchen, retro bathroom with bath
- Apartment-wide sunroom with leafy outlook
- Upgraded security lobby/lifts, shared laundry
- Minutes to Elizabeth Bay and Finger Wharf

**R&W**

**Auction Thursday, 28th November 6:00 - On Site**

Open Saturday, 16th November 2024 1:00 - 1:30

**[rwebay.com.au/8172909](https://rwebay.com.au/8172909)**

Jason Boon 0418 671 494

Geoff Cox 0418 231 004

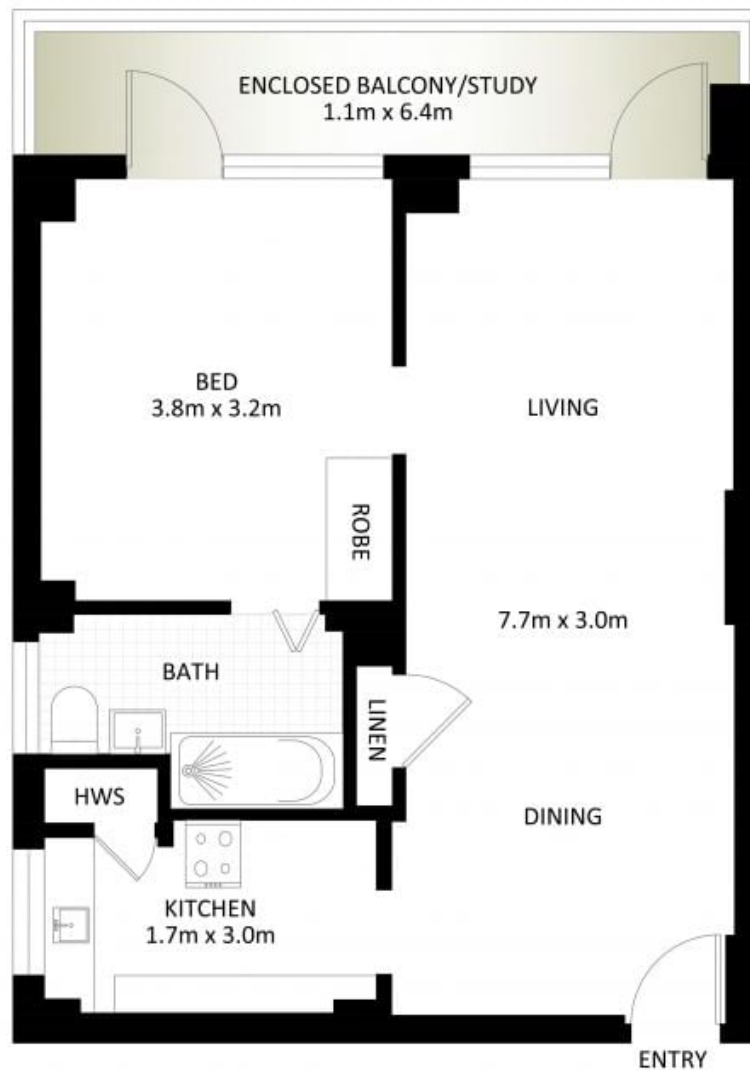
Joss Reid 0414 662 391

**Proudly Richardson & Wrench**

Richardson & Wrench Elizabeth Bay / Potts Point  
02 8356 2700

**R&W**

Elizabeth Bay / Potts Point  
8356 2700



## 21/12 Wylde Street, Potts Point

\*PLANS SHOWN ONLY INDICATIVE OF LAYOUT. DIMENSIONS ARE APPROXIMATE.

Measurements are approximate and not to scale. The vendor, agency and supplier will accept no liability for its accuracy. Interested parties are advised to make their own independent enquiries.

