



## 416/13-15 Bayswater Road Potts Point, NSW

1 bed | 1 bath

**R&W**

The Hampton is at the heart of everything Sydney has to offer and combines contemporary fitout in a highly regarded Art Deco building. In Potts Point, young professionals, downsizers and well-heeled locals spill out from the many chic eateries, bars and terrace cafes alongside excellent fresh food stores, bakeries, and delis. Stunning bars, restaurants, cafes and eateries enliven the cosmopolitan walkways in a melange of colour, tastes, atmosphere, vibe and energy. The CBD is only a 1km walk away with many local gyms, yoga and pilates studios nearby. Public transport and taxis abound.

This oversized one bedroom apartment offers a large ope...

**Auction Thursday, 5th December 6:00 - On Site**

Open Saturday, 16th November 2024 9:00 - 9:30

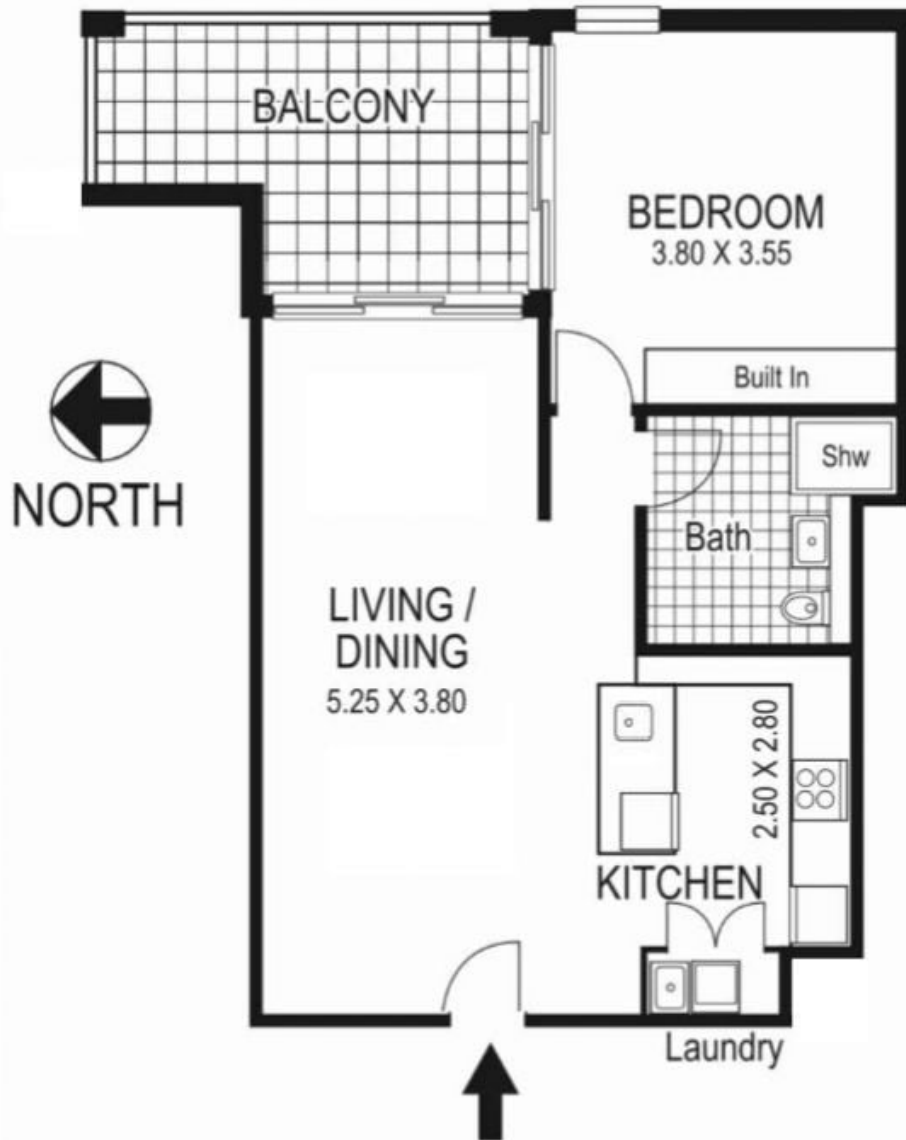
**[rwebay.com.au/8173229](https://www.rwebay.com.au/8173229)**

Penny Timothy 0418 546 500

Luke McDonnell 0418 844 110

**Proudly Richardson&Wrench**

Richardson & Wrench Elizabeth Bay / Potts Point  
02 8356 2700



## 416/13-15 Bayswater Road, Potts Point

Plans shown are for presentation purposes only and are not part of any legal document or title and are subject to errors, omissions, inaccuracies and they should not be used as sole and/or accurate reference for purchasing decision. Interested parties should make their own enquiries using other sources supplied.