



1/113-125 Palmer Street Woolloomooloo, NSW

2 bed | 1 bath | 1 car

R&W

Discover this double-level townhouse, with direct street access in the "Diplomat Building," offering a spacious resort-like lifestyle. Enjoy lifestyle amenities with a stunning outdoor pool and steam sauna. The property features two generous bedrooms with built-ins, an updated bathroom with separate toilet, oversized outdoor terrace, an open-plan living / dining area, a modern kitchen, a secure lock-up garage and a separate guest powder room downstairs.

Experience an exceptional lifestyle in this quiet, ligh...

Auction Thursday, 28th November 6:00 - On Site

Open Saturday, 16th November 2024 10:00 - 10:30

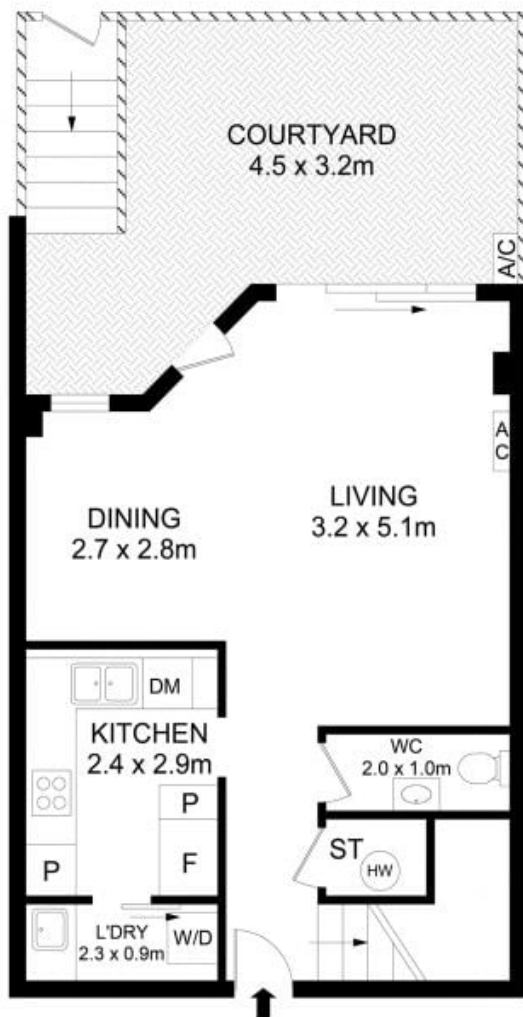
[rwebay.com.au/8173355](https://www.rwebay.com.au/8173355)

Angelo Bouras 0401 658 653

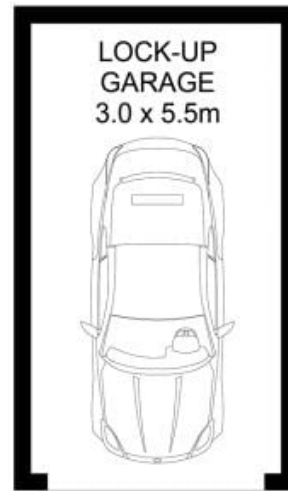
Thomas Arthurs 0414 026 412

Proudly Richardson&Wrench

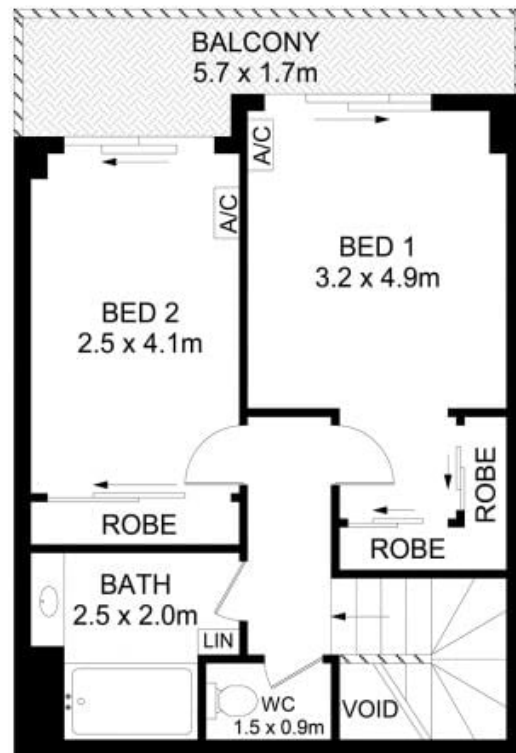
Richardson & Wrench Elizabeth Bay / Potts Point
02 8356 2700



GROUND LEVEL



BASEMENT



FIRST LEVEL

1/113 Palmer Street, Woolloomooloo



Disclaimer

Floor Plan measurements are approximate and are for illustrative purposes only. While we cannot doubt the floor plans accuracy, we make no guarantee, warranty or representation as to the accuracy and completeness of the floor plan.

Every precaution has been taken to establish accuracy of the information in this brochure but does not constitute any representation by the vendor or agent.

