



33/16 Macleay Street Potts Point, NSW

1 bed | 1 bath

Step into your dream home in this stunning one-bedroom strata, perfectly situated on the north side of the highly sought-after "Selsdon" building.

A gracious entry foyer sets the tone for the elegance found throughout the apartment. With its classic Art Deco charm, the foyer features beautiful architectural details, inviting you into a space that blends sophistication with warmth.

The apartment showcases delightful Art Deco features, including elegant picture rails, soaring high ceilings, and polished timber floors that add a touch of refinement to your living space.

Designed for both comfort and style, the spacious livin...

R&W

Auction Thursday, 28th November 6:00 - On Site

Open Saturday, 16th November 2024 10:00 - 10:30

[rwebay.com.au/8174582](https://www.rwebay.com.au/8174582)

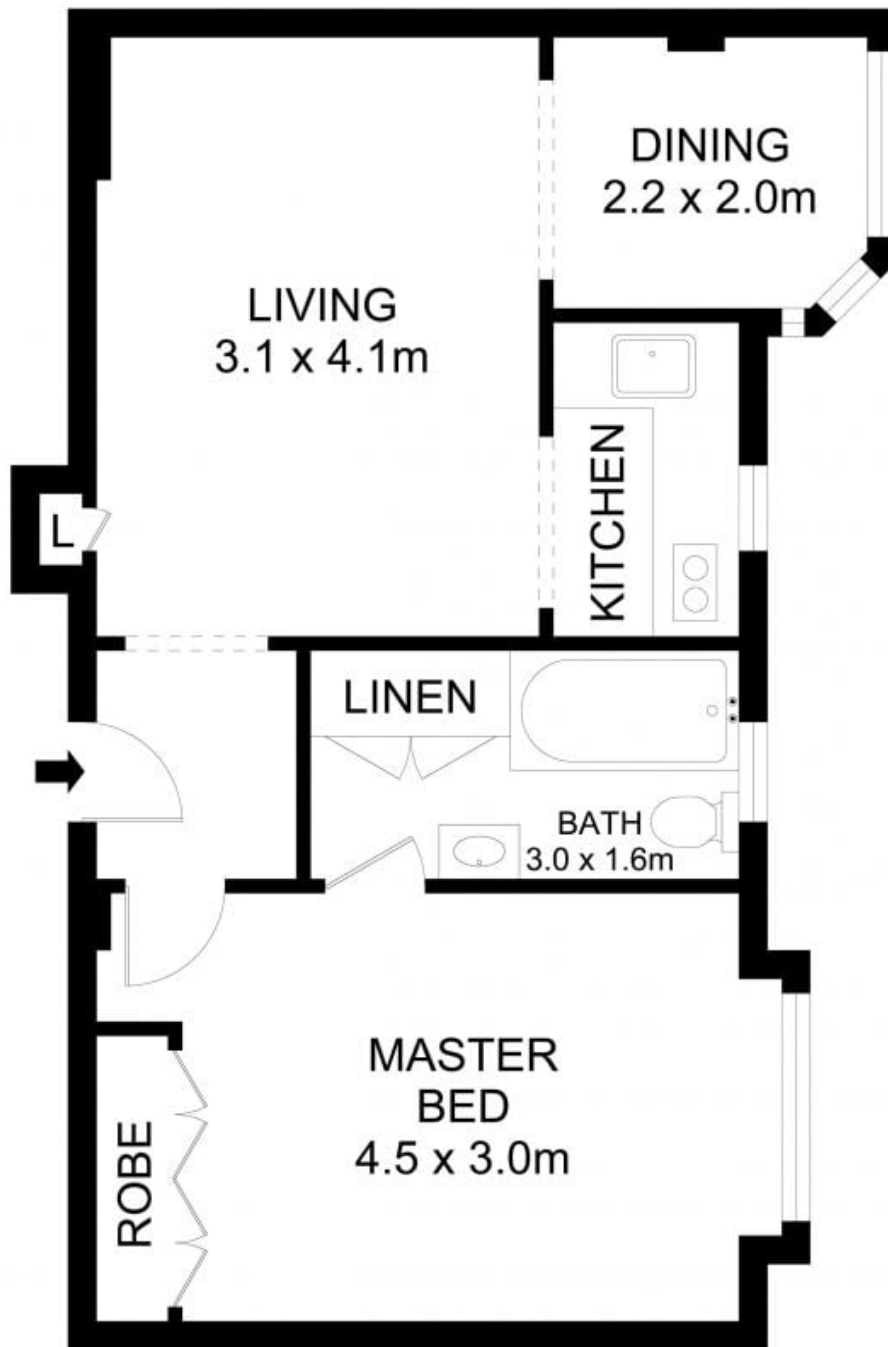
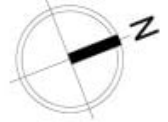
Penny Timothy 0418 546 500

Penny Timothy 0418 546 500

Luke McDonnell 0418 844 110

Proudly Richardson & Wrench

Richardson & Wrench Elizabeth Bay / Potts Point
02 8356 2700



0 1 2 5

33/16 Macleay Street, Potts Point

Disclaimer

Floor Plan measurements are approximate and are for illustrative purposes only. While we cannot doubt the floor plans accuracy, we make no guarantee, warranty or representation as to the accuracy and completeness of the floor plan.