



9/81 Elizabeth Bay Road Elizabeth Bay, NSW

4 bed | 2 bath | 1 car

R&W

Representing one of the most significant Elizabeth Bay Art Deco opportunities in years, offered directly to the market for the very first time, this landmark 3-to-4 bedroom penthouse exudes timeless elegance in a premier harbour-side setting. Positioned atop a celebrated c1930s Spanish Mission building on exclusive Elizabeth Bay Loop, it combines vast interiors with opulent Deco features to form a sumptuous sun-filled abode of substantial magnitude.

Entering through an elegant doorway into an ornate hall...

Open Saturday, 16th November 2024 10:00 - 10:30

rwebay.com.au/8176583

Jason Boon 0418 671 494

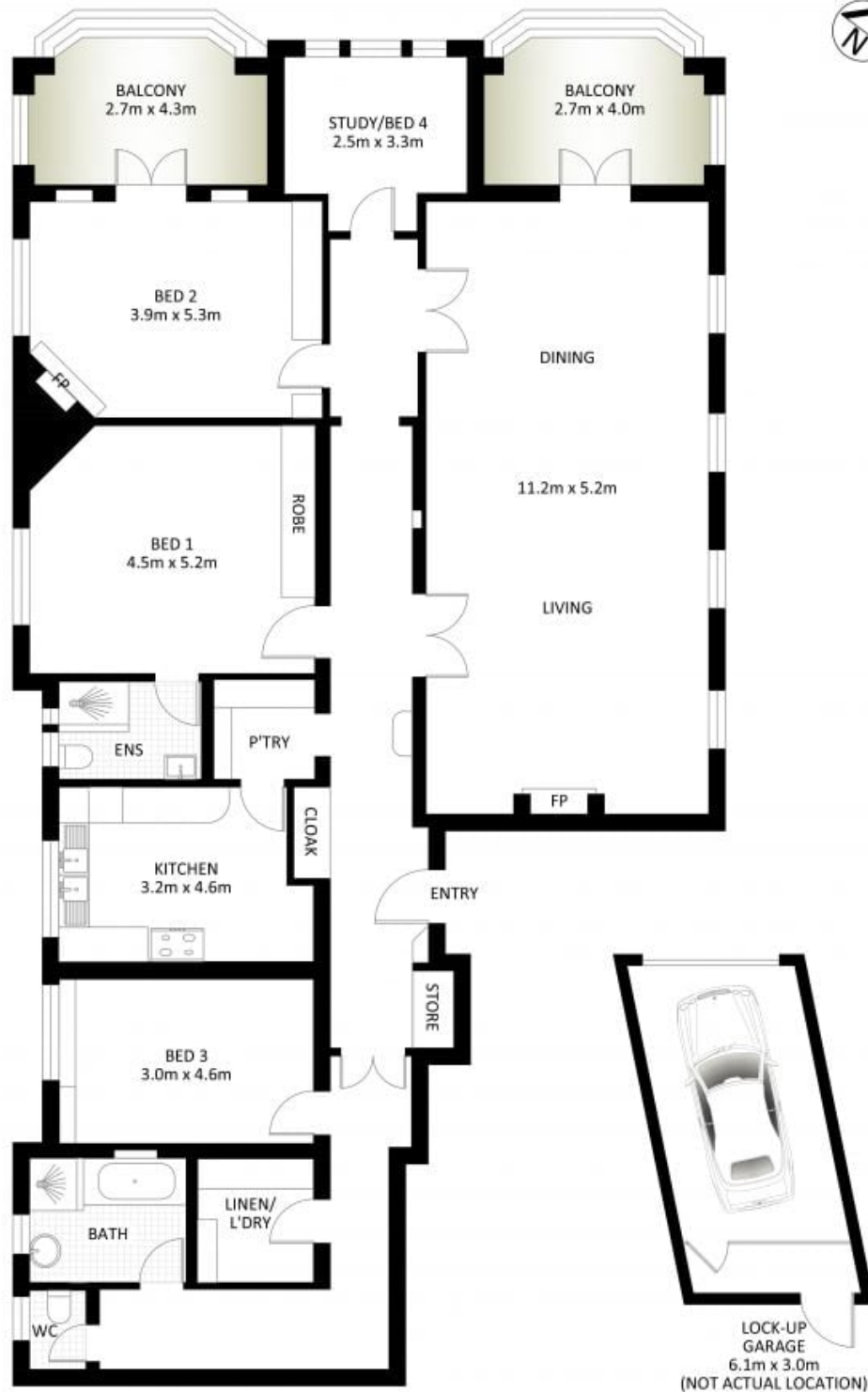
Geoff Cox 0418 231 004

Proudly Richardson&Wrench

Richardson & Wrench Elizabeth Bay / Potts Point
02 8356 2700

R&W

Elizabeth Bay / Potts Point
8356 2700



9/81 Elizabeth Bay Road, Elizabeth Bay

*PLANS SHOWN ONLY INDICATIVE OF LAYOUT. DIMENSIONS ARE APPROXIMATE.

Measurements are approximate and not to scale. The vendor, agency and supplier will accept no liability for its accuracy. Interested parties are advised to make their own independent enquiries.

Every precaution has been taken to establish accuracy of the information in this brochure but does not constitute any representation by the vendor or agent.

R&W