



1303/81 Macleay Street Potts Point, NSW

3 bed | 2 bath | 2 car

A stunning new redesign has optimised the sleek sophistication and wall to wall views of this prized apartment's 2 large levels of accommodation. High floor positioned on the northernmost wing of Mirvac's most successful contemporary lifestyle block, all major rooms of this house-sized security apartment feature spectacular views of Sydney's iconic harbour-city. Showcasing Woolloomooloo Bay, the CBD, Botanic Gardens, Opera House and Bridge, the views include bobbing boats and up the Harbour.

R&W

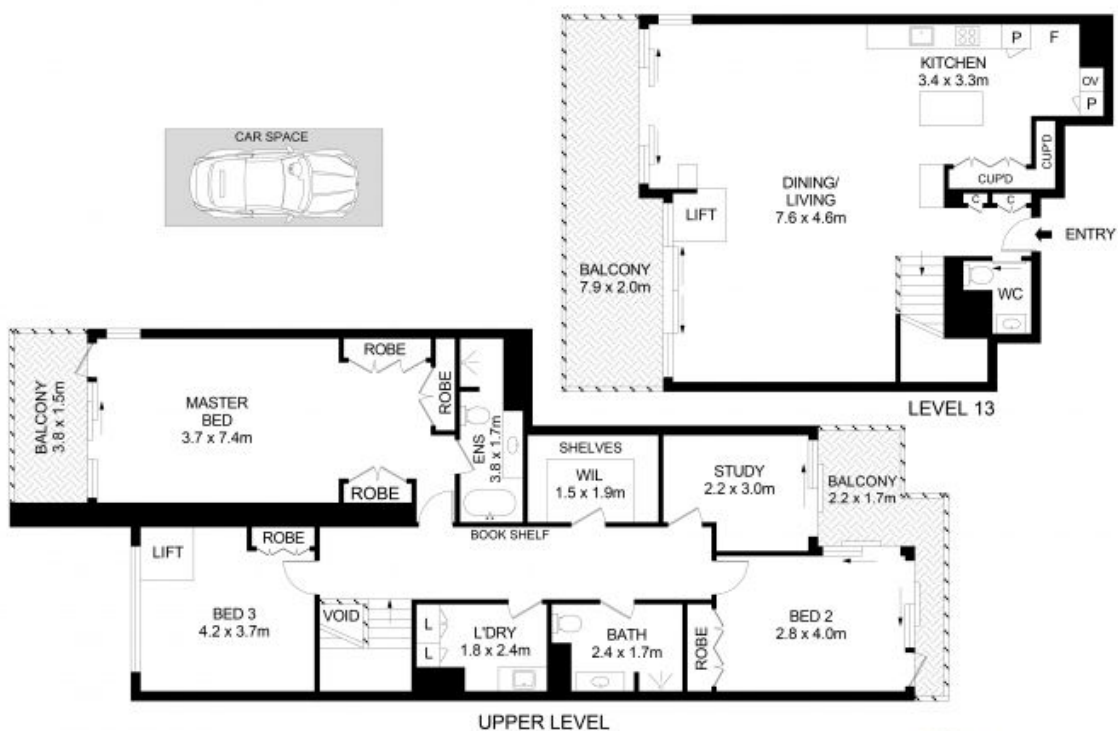
rwebay.com.au/8178414

Jason Boon 0418 671 494

Geoff Cox 0418 231 004

Proudly Richardson&Wrench

Richardson & Wrench Elizabeth Bay / Potts Point
02 8356 2700



1303/81 Macleay Street, Potts Point, NSW 2011

Disclaimer
Floor Plan measurements are approximate and are for illustrative purposes only. While we cannot doubt the floor plans accuracy, we make no guarantee, warranty or representation as to the accuracy and completeness of the floor plan

