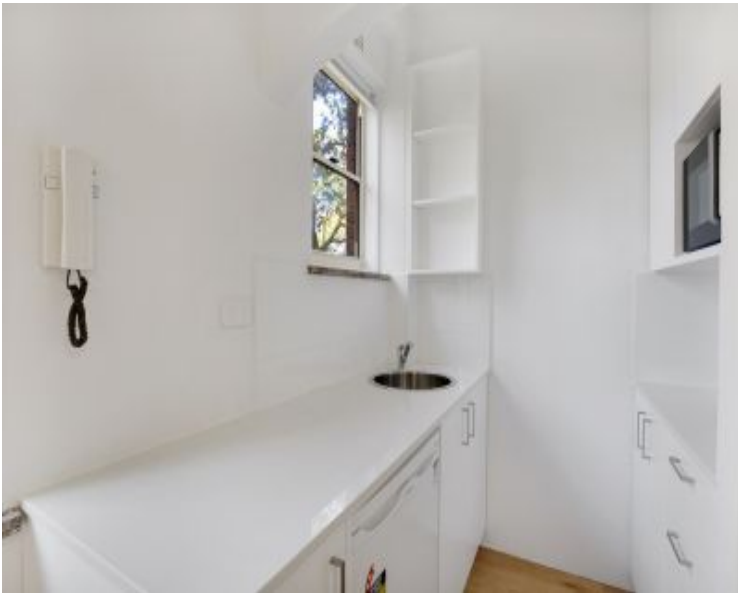


DIGITAL FURNITURE



## 19/76 Elizabeth Bay Road Elizabeth Bay, NSW

| 1 bath

East facing 20sqm studio apartment at the entry to the Elizabeth Bay loop

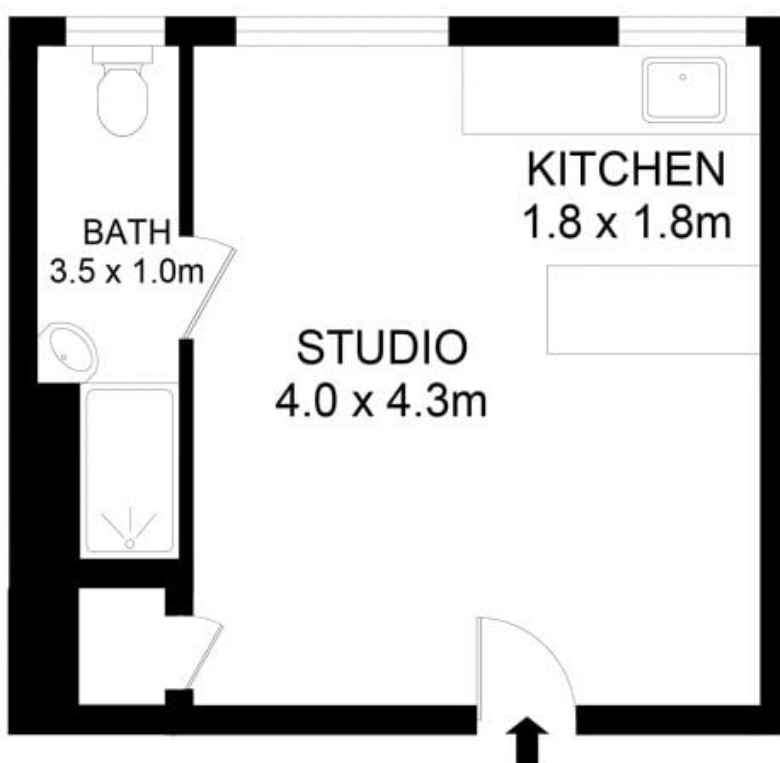
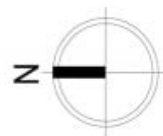
**R&W**

**[rwebay.com.au/8182334](http://rwebay.com.au/8182334)**

Greg McKinley 0412 044 822

**Proudly Richardson&Wrench**

Richardson & Wrench Elizabeth Bay / Potts Point  
02 8356 2700



19/76 Elizabeth Bay Road, Elizabeth Bay

**Disclaimer**

Floor Plan measurements are approximate and are for illustrative purposes only. While we cannot doubt the floor plans accuracy, we make no guarantee, warranty or representation as to the accuracy and completeness of the floor plan.

Every precaution has been taken to establish accuracy of the information in this brochure but does not constitute any representation by the vendor or agent.

**R&W**